

EMPOWERING YOUR REALTIONSHIP WITH CHRIST

lifetrack

SHADY GROVE WESLEYAN CHURCH

LEADER MANUAL

REACH | TEACH | GIVE | GO



FIRST EDITION

HOSTS AND TEACHERS OF LIFE TRACK:

I want to personally thank you for being part of this amazing ministry! Life Track allows the people of Shady Grove to understand our mission statement and discover ways to be part of this church. Your role as Life Track Hosts is so vital to making people feel welcomed, encouraged and cared for! Your contribution during class and your immediate follow up is critical as you help connect people into the body of Christ.

Teachers, you inspire the hearts and minds of the listeners and challenge them spiritually to be all they can be for the Lord! Your passion for the mission of Shady Grove will



make a huge impact in their lives and the growth of the church!

I am grateful that I can plug Life Track and know this ministry is being led by committed and passionate people who recognize the importance of others embracing the mission of the church and helping them understand their part in impacting the kingdom of God.

I am also thrilled that Life Track can run without me and this team owns the process with everyone "on mission"!

Thank you,
Pastor Nate Kingsbury

DEAR LIFE TRACK TEAM,

What a blessing to have you part of this ministry at Shady Grove. Your role in leading people through Life Track is vital to the process of connecting Shady Grove folks to active roles of ministry in the Church, where they will grow in God and grow with other believers. Thank you for your service.

I wanted to share a few thoughts regarding Life Track and our place in it. First, when you share the heart and purpose of Life Track, here is a sample of the idea we want you to convey:

"Life Track is the **next step to connecting** at Shady Grove. It is a **pathway to learn** how to reach, teach, give and go in the power and love of Jesus Christ. Life Track is a **tool to aid us in the process of connecting** people to the different aspects of ministry at Shady Grove. Our goal is to see people grow in God and with other believers as they live out the Great Commission.

It is for the **new person** who wants to **learn more** about our church, how to grow as a believer and how to get involved at Shady Grove. It's for the **regular attender**, who still needs to **plug in** and have an opportunity to grow with other believers. It's for the **mature follower** of Jesus, already serving in their passion area, **leading in support** of Life Track for others."

Second, as a leader in this ministry, we trust that your life is a clear reflection of Biblical values and Shady Grove Church. Specifically, we believe as leaders we will:

- have a growing relationship with Jesus Christ
- regularly attend weekly services at Shady Grove
- commit to set a positive example
- commit to be above reproach in all things
- commit to an atmosphere of encouragement and support
- pray for each other regularly
- have healthy confrontational relationships and not engage in gossip
- maintain a spirit of unity with our church, the leadership, and each other

Last, as we look to our Savior, Jesus Christ, in all things we desire a heart that reflects His heart. Jesus was the greatest leader of all, and paradoxically, the greatest servant of all too. In following His footsteps, may we remember that we lead best when we serve first - our God, and then His children.

I am thrilled to be a part of this team with you and am excited to see how Life Track positively impacts each person and ultimately, our church, community, and the world.

Blessings,

Jody Trivette
Life Track Point Person



Welcome to Life Track!

I am so excited you have chosen to learn more about Shady Grove Wesleyan Church. Life Track is a process we created to help you understand our church, help you grow in Christ, and learn how you can be a vital part of this local body. This is an interactive, action-packed opportunity for you to partner with us as we make a difference for Jesus Christ. Let's get started!

Pastor Nate Kingsbury
Pastor Nate Kingsbury



Life Track® is copyrighted material of Shady Grove Wesleyan Church.
Reproduction without consent is prohibited. For additional copies, or other instructional materials,
please contact Shady Grove Wesleyan Church, 119 N. Bunker Hill Drive, Colfax, NC 27372.

FIRST EDITION published by Piedmont Printing and Graphics; Greensboro, NC
Copyrighted 2014. All rights reserved.



WELCOME TO SHADY GROVE WESLEYAN CHURCH

LIFE TRACK MANUAL

WELCOME!

It is our hope that you will discover so much more than interesting facts about Shady Grove Wesleyan Church. We hope you will see that Jesus commissioned His followers, the church, to carry the transforming message of the Gospel to the entire world, and that you have a vital role in seeing that mission come to pass.

Life Track is designed to empower you to have a life-giving relationship with Jesus Christ.

We desire to have you **"Reach"**, by understanding your commitment to Christ, which includes reaching out to those who do not know Jesus. We desire to **"Teach"** you about God's Word, and have you involved in a Life Group or Sunday school class to help you grow with other people who are searching after God. We believe we all need to **"Give"** of our time, resources and finances. We want you to discover the gifts God gave you to use, and give of your time to serve and impact others within our church and outside our walls. Our plan is for you to **GO**

by being a person of impact, influencing locally, nationally and internationally by being "missional" - on the move to make an impact for Christ.

Though we are all different, there is one thing we all have in common...God created each one of us with a purpose. Welcome to the journey of discovering your purpose and your place in a life-changing ministry here at Shady Grove Wesleyan Church.

[Welcome to Life Track!](#)

**REACH, TEACH, GIVE AND GO IN THE POWER
AND LOVE OF JESUS CHRIST**

CONTENTS

06 Welcome
& Shady Grove Story

09 Reach 101

15 Teach 201

24 Give 301

35 Go 401

40 Appendix 1
Understanding God's Word

42 Appendix 2
Other Prayer Tips

44 Appendix 3
Fasting

45 Appendix 4
Discover Your Spiritual Gifts

50 Appendix 5
Discover Your Passion

52 Appendix 6
Discover Your Natural Abilities

53 Appendix 7
Discover Your Personality Profile

58 Appendix 8
Discover Your Experiences

59 Appendix 9
Questions About Tithing

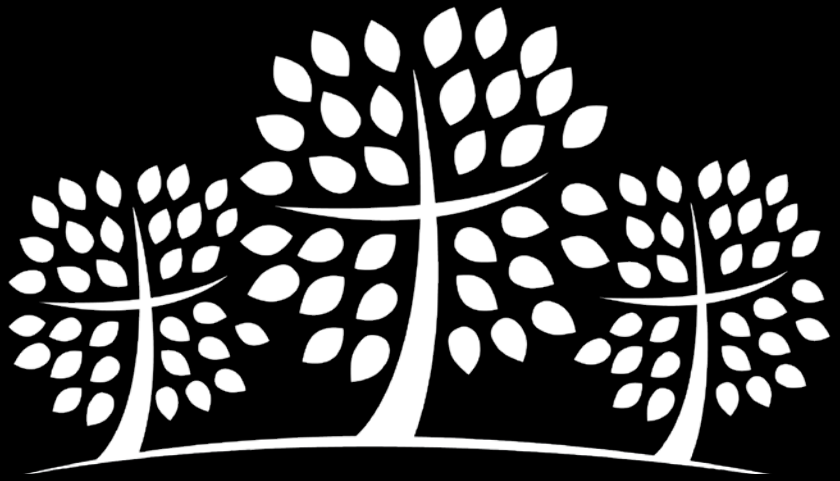
60 Appendix 10
Discovery Form

61 Appendix 11
Extra Resources

62. Acknowledgements

UNLESS OTHERWISE NOTED, ALL SCRIPTURE IS TAKEN FROM THE NIV.





Welcome to Shady Grove

LET'S START OUT BY MAKING SURE YOU UNDERSTAND

A LITTLE ABOUT OUR CHURCH FAMILY. BECAUSE WE HAVE PEOPLE FROM MANY DIFFERENT DENOMINATIONAL BACKGROUNDS WHO WORSHIP HERE, WE FEEL IT IS IMPORTANT TO SHARE SHADY GROVE PAST AND PRESENT. THEN WE CAN WORK TOGETHER TO EFFECTIVELY REACH THOSE OUTSIDE THE CHURCH.

Who are Wesleyans? The Wesleyan Church is an evangelical Protestant denomination based on the Methodist theology of John Wesley. The Wesleyan Church seeks a Spirit-filled life for each believer. Historically, the Wesleyan Church supported the rights of women, was anti-slavery and worked to address social concerns.

Shady Grove has a rich history that goes back to 1847 when the first Wesleyan missionary came to Colfax to begin a Wesleyan Methodist work in the South. The church was formally organized in 1872 and has existed as a center for community and a place where people have been challenged to live for Christ. That same purpose and passion still exists today as we endeavor to reach, teach, give and go in the power and love of Christ!

Mission statement

HOW IT CAME ABOUT: AFTER MUCH PRAYER, IN AUGUST 2013, GOD GAVE US THIS VISION FOR THE CHURCH: **OUR MISSION STATEMENT IS:** "OUR MISSION IS TO REACH, TEACH, GIVE AND GO IN THE POWER AND LOVE OF JESUS CHRIST"

WE BELIEVE A **CHRIST-FOLLOWER** IS A PERSON WHO TAKES THESE FOUR STEPS...

STEP 1: REACH

REACH PEOPLE WHO DO NOT KNOW JESUS CHRIST AS THEIR PERSONAL SAVIOR.

STEP 2: TEACH

TEACH PEOPLE TO GROW IN GOD'S WORD AND GROW WITH OTHER BELIEVERS.

STEP 3: GIVE

GIVE OF OUR TIME, RESOURCES AND TALENTS BY GIVING INSIDE THE CHURCH, AND OUTSIDE THE CHURCH TO IMPACT OUR COMMUNITY.

STEP 4: GO

BECOME PEOPLE WHO ACCEPT THE GREAT COMMISSION AND IMPACT THE CULTURE THROUGH MISSIONS, SERVICE AND LEADERSHIP.

PROCESS OF LIFE TRACK

The Shady Grove Wesleyan Church Life Track offers a simple strategy for helping people to take small but powerful steps in their spiritual journey, so that they can develop into a fully devoted follower of Christ.



"Therefore, let us leave the elementary teachings about Christ and go on to maturity..." Hebrews 6:1

REACH 101

This is a basic overview of Shady Grove Wesleyan Church. It is designed to help you understand who you are in Christ and introduce you to the process of sharing your faith. Reach 101 is held the first Sunday of every month.

TEACH 201

In Teach 201, we discuss vital habits for believers to become fully devoted followers of Christ and the importance of being connected in a Life Group. At the end of Teach 201 we hope you will commit to these spiritual disciplines and join a Life Group. Teach 201 is held the second Sunday of every month.

GIVE 301

Give 301 is designed to help you discover your gifts and how you are uniquely designed to serve the body of Christ. At the end of Give 301 you will discover your passion and gifts, and have an opportunity to serve in one of our ministries. Give 301 is held on the third Sunday of the month.

GO 401

In Go 401, you will have the privilege to join a ministry team in reaching people for Christ locally, nationally and internationally. Go 401 is held on the fourth Sunday of each month.

HOSTS

To Have Ready:

- Arrive at least 15 minutes before class begins to set up (debrief with teachers, pray, set up, get paperwork ready)
- Attendance forms, pens, nametags, books
- Arrange and move unused tables and chairs
- Call class to order within five minutes of start time
- Introduce teacher and all hosts. Explain why attendance record needs to be completed.
- If requested, provide: church history, visitor information pack, salvation process, church information. (All located in the Life Track cabinet.)
- Have video clip ready for teacher to use. When there are two videos, use Pastor Nate's introductory video to start the class and the 2nd video after page 10.

To DO During or After Class:

- Record attendance
- Anyone making up 101 session from previous class, give certificate of completion if they have completed all four tracks
- At least one host needs to stay until the last attendee has left, saying goodbye and being available for questions or comments.
- Arrange tables and chairs to original places
- Contact by email, text or phone call a reminder: include thanks for coming, remind them to bring their book next week, and start discovery forms in appendix.

TEACHERS

Remember that the real purpose of Life Track is to provide a system for people, new and regular attendees to become involved in ministry at Shady Grove. Teachers should be very intentional about helping people connect in Life Track and after Life Track. The function of the host is to prepare each track for class, follow up and prepare for the next class. They are available to answer questions, provide resources and ensure a smooth process for the participants. Please be sure to defer to them throughout the track, when appropriate.

Be sure to mention the Discovery Forms in the Appendix for them to begin, and their homework that will need to be completed.

Unless class begins very late, be sure to include the recommended video. It is only 2 minutes long and will provide a great on-ramp for beginning the class and calling them to order.

LIFE TRACK | SHADY GROVE WESLEYAN CHURCH

REACH 101

REACH, TEACH, GIVE AND GO IN THE POWER AND LOVE OF JESUS CHRIST



REACH › TEACH › GIVE › GO
in the power and love of Jesus Christ

Reach people who do not know Jesus Christ as their personal savior.

LIFE TRACK Reach 101

Service attended: _____ Date: _____

First Name: _____ Last Name: _____

Address: _____ City: _____ Zip: _____

Home Phone: _____ Cell: _____

Email: _____ Email Updates (Circle): Yes or No

Social Media (Circle): Facebook or Twitter Gender (Circle): M or F

Preferred Method of Contact: Phone _____ Email _____ Text _____ If text, cell provider: _____

Have you attended any other weeks of Life Track? Yes _____ No _____

If yes, which week? 101 _____ 201 _____ 301 _____ 401 _____



**IF ANYONE WANTS TO ACCEPT CHRIST INTO THEIR HEART,
HAVE THEM SEE A HOST TO PRAY WITH THEM.**

WELCOME TO

**REACH
101**

The goal of Reach 101 is to give an overview of Shady Grove Wesleyan Church. It is designed to help you understand who you are in Christ and introduce you to the process of sharing your faith.

WHO YOU ARE IN CHRIST

Why We Need Redemption:

- God created everything we see, everything we have, and **EVERYTHING** we are.
- Sin entered the world and **SEPARATED** us from God.
- Through the Old Testament, we see that we cannot do **ANYTHING** on our own to get back to God.
- God sent His Son as the **SAVIOR** to this world.
- Fully God, He came in human form, led a **SINLESS** life, and died for us. Scripture says in 2 Corinthians 5:21, "God made Him who had no sin to be sin for us, so that in Him, we might become the righteousness of God."
- Jesus paid the **PENALTY** for our sin and bridged the gap between us and God.
- Through Jesus, we can have **INTERNAL LIFE** with God.

"God made Him who had **no sin to be sin for us**, so that in Him, we might become the **righteousness of God.**"
2 Corinthians 5:21

"For '**Everyone** who calls on the name of the Lord **will be saved.**'"
Romans 10:13

HOW TO RECEIVE SALVATION

(Roman's Road):

- Romans 3:23 "For all have sinned and fall short of the glory of God."
- Romans 6:23 "For the wages of sin is death, but the gift of God is eternal life in Christ Jesus our Lord."
- Romans 5:8 "But God demonstrates His own love for us in this: while we were still sinners, Christ died for us."
- Romans 10:9,10 "If you declare with your mouth, 'Jesus is Lord,' and believe in your heart that God raised Him from the dead, you will be saved. For it is with your heart that you believe and are justified, and it is with your mouth that you profess your faith and are saved."
- Romans 10:13 "For 'Everyone who calls on the name of the Lord will be saved.'"

"If you declare with your mouth, '**Jesus is Lord,**' and believe in your heart that God raised Him from the dead, **you will be saved.** For it is with your heart that you believe and are justified, and it is with your mouth that **you profess your faith and are saved.**"
Romans 10:9,10

Sharing Your Faith

Tips To Helping You Share Your Faith:

1. Our life should be **BURDENED** for those who do not know Jesus.

"Then He said to His disciples, 'The harvest is plentiful but the workers are few.'" Matthew 9:37

"It is not the healthy who need a doctor, but the sick. But go and learn what this means: 'I desire mercy, not sacrifice.' For I have not come to call the righteous, but sinners." Matthew 9:12,13

2. Remember it's about building a **FRIENDSHIP** first.

3. You don't need to have any **SPECIAL TRAINING** to share your faith – take the opportunities God gives you.

"When they saw the courage of Peter and John and realized that they were unschooled, ordinary men, they were astonished and they took note that these men had been with Jesus." Acts 4:13

4. **BE YOU** when you share your faith.

"And so it was with me, brothers and sisters. When I came to you, I did not come with eloquence or human wisdom as I proclaimed to you the testimony about God. For I resolved to know nothing while I was with you except Jesus Christ and Him crucified." 1 Corinthians 2:1,2

QUESTIONS TO CONSIDER:

1. Have you received God's **FREE GIFT** of eternal life?
2. Have you been **BAPTIZED** by immersion after receiving this gift?
3. Are there any **ROAD BLOCKS** in your spiritual life that need to be removed?

If you need to discuss any of these questions, feel free to stay after and talk with our host leader about how you can have a relationship with Jesus Christ, or feel free to contact one of our pastors at www.shadygrove.net or 336-993-2625.

5. Be open **TO LISTEN** and hear God's leading.

"Whether you turn to the right or to the left, your ears will hear a voice behind you, saying, 'This is the way; walk in it.'" Isaiah 30:21

6. Witnessing requires a willingness to feel **UNCOMFORTABLE**.

"For I am not ashamed of the gospel, because it is the power of God that brings salvation to everyone who believes: first to the Jew, then to the Gentile." Romans 1:16

Our Mission is to **REACH** by:

One simple way to share the Good News is to invite others to come to church with you! Shady Grove Invite Cards are available for you to give to friends, neighbors, coworkers - even your server at a restaurant. It's an easy way to extend an invitation, taking a first step in sharing the love of Christ with those around us.

1. **DEVELOPING** a heart for those who do not know Jesus.
2. Being **MERCIFUL** to those who mess up spiritually; that we will not judge, but walk with a person, helping them experience the love and forgiveness of Christ.
3. **MAKING ROOM** for new visitors in our seats, in our Bible studies, and in our Life Groups.
4. Looking for **OPPORTUNITIES** daily to share about Christ.
5. Looking for opportunities **EVERYWHERE** to pray for the needs of others.
6. Having our hearts **PERSONALLY BROKEN** to know Jesus more deeply.
7. Getting excited when we **DON'T RECOGNIZE** everyone who attends Shady Grove.
8. Rejoicing that people are getting saved, baptized and **GROWING** to be more like Jesus Christ.
9. Being **UNIFIED** with the mission to reach those who do not know Jesus Christ.
10. Understanding that time is **FLEETING**; we need to have urgency in sharing the gospel.

Action Step:

Write **YOUR** story

My Personal Relationship With Christ

Name: _____

Date: _____

My life BEFORE I accepted Christ:

HOW and WHEN I accepted Jesus as my Savior:

What my life is like NOW:



**HAVE PEOPLE TAKE OUT THEIR PHONES AND
LOOK THROUGH THEIR CONTACT LIST TO SEE
THEIR CIRCLE OF INFLUENCE.**

WHAT NOW?

IDENTIFY Circle Of Influence

You have heard it said, "No man is an island." We all live our lives in community. Families and friends are the most obvious, but our circle of influence expands to include coworkers, the clerk at the shop we see regularly, the server at our favorite restaurant and many more that make up the fabric of our lives. It is important to identify our circle of influence. God may have put that person in your life just so you can share the good news with them!

List five people with whom you can share the message of Jesus Christ:

- 1.
- 2.
- 3.
- 4.
- 5.

Who are people in your family that need the love of Christ?

- 1.
- 2.
- 3.
- 4.
- 5.

What other coworkers/employees/friends/neighbors has God brought to mind who could be your "one"?

- 1.
- 2.
- 3.
- 4.
- 5.

Now, using your story and this list, go and share the love of Christ with those around you!

HOSTS

To Have Ready:

- Arrive at least 15 minutes before class begins to set up (debrief with teachers, pray, set up, get paperwork ready)
- Attendance forms, pens, nametags, books
- Arrange and move unused tables and chairs
- Notify teacher if previous class did not complete content, had any issues or questions that need clarity
- Call class to order within five minutes of start time
- Introduce teacher and all hosts. Explain why attendance record needs to be completed.
- Have ready to hand out if requested: Life Group/Sunday School/Bible Study information (in Life Track cabinet)
- Print Action Step page 23 Life Group Information
- Have video clip ready for teacher to use

To DO During or After Class:

- Record attendance, note any new people
- Anyone making up 201 session from previous class, give certificate of completion if they have completed all four tracks
- Note anyone interested in Life Groups/Sunday School/Bible Studies
- connect them with the right class or group
- record current class or group already attending and note any changes
- At least one host needs to stay until the last attendee has left, saying goodbye and being available for questions or comments.
- Arrange tables and chairs to original places
- Contact by email, text or phone call a reminder: include thanks for coming, remind them to bring their book next week, and start discovery forms in appendix.

TEACHERS

Remember that the real purpose of Life Track is to provide a system for people, new and regular attendees to become involved in ministry at Shady Grove. Teachers should be very intentional about helping people connect in Life Track and after Life Track. The function of the host is to prepare each track for class, follow up and prepare for the next class. They are available to answer questions, provide resources and ensure a smooth process for the participants. Please be sure to defer to them throughout the track, when appropriate.

Be sure to mention the Discovery Forms in the Appendix for them to begin.

Unless class begins very late, be sure to include the recommended video. It is only 2 minutes long. The video for 201 should be used before page 21.

LIFE TRACK | SHADY GROVE WESLEYAN CHURCH

TEACH 201

REACH, TEACH, GIVE AND GO IN THE POWER AND LOVE OF JESUS CHRIST

Teach people to
grow in God's Word
and grow with other
believers.



REACH ▸ TEACH ▸ GIVE ▸ GO
in the power and love of Jesus Christ

LIFE TRACK Teach 201

Service attended: _____ Date: _____

First Name: _____ Last Name: _____

Address: _____ City: _____ Zip: _____

Home Phone: _____ Cell: _____

Email: _____ Email Updates (Circle): Yes or No

Social Media (Circle): Facebook or Twitter Gender (Circle): M or F

Preferred Method of Contact: Phone _____ Email _____ Text _____ If text, cell provider: _____

Have you attended any other weeks of Life Track? Yes _____ No _____

If yes, which week? 101 _____ 201 _____ 301 _____ 401 _____

In Reach 101, we discussed who Shady Grove is, who you are in Christ, and our desire to see this local body of believers reaching out to their circle of influence, sharing the love of Jesus Christ with them.

WELCOME TO

TEACH
201

The goal of Teach 201 is for you to discover the practices we feel are important to becoming a mature follower of Christ and the value of connecting with God and connecting with other believers.

WHAT IS SPIRITUAL MATURITY?

Spiritual maturity is becoming like Christ.

1. It is not **AUTOMATIC**.
2. It is a **PROCESS**
3. It takes **DISCIPLINE**.

"Like newborn babies, crave pure spiritual milk, so that by it you may grow up in your salvation, now that you have tasted that the Lord is good." 1 Peter 2:2,3

"Let us **not give up** the habit of meeting together...but let us **encourage one another...**"
Hebrews 10:25 (GNT)

The purpose of this class is to **provide the tools** necessary to help each believer **become a** spiritually mature **disciple** of Jesus Christ.

FOUR VITAL HABITS

At Shady Grove we believe there are four individual "habits" that can help us become mature followers of Christ.

"...You have put off the old self with its HABITS, and have put on the new self...which God is continually renewing in His own image, to bring you to a full knowledge of Himself." Colossians 3:5-10 (paraphrase)

Habit - "An acquired pattern of behavior regularly followed until it has become almost involuntary." (dictionary.com)

The process of discipleship is a process that is a **life-long journey**. This class is the beginning of a **transformed life**.

HABIT 1:

Bible STUDY

God's word is applicable to every area of our lives and has the power to transform us into the person God has called us to be. Therefore, **the first habit we need to develop is to consistently read and study God's Word!**

HOW CAN WE GET MORE OUT OF READING THE BIBLE?

1. Accept its **AUTHORITY**

"And we also thank God continually because when you received the word of God, which you heard from us, you accepted it not as the word of men but as it actually is, the word of God, which is at work in you who believe." 1 Thessalonians 2:13

Your attitude towards the Bible makes a huge difference. While we may not fully understand it, we can still accept its authority. We can trust and accept the authority of what we don't understand because of who God is and the inerrancy of His Word.

2. Apply its **PRINCIPLES**

As you read:

- **1st ask:** What did it mean to the original hearers?
- **2nd ask:** What is the underlying timeless principle that still applies today?
- **3rd ask:** How can I practice that principle in my daily life?

Learn More!
Appendix 1 on
pages 40-41 for
more information

"All Scripture is **God-breathed** and is useful for teaching, rebuking, correcting and training in **righteousness**, so that the servant of God may be **thoroughly equipped** for every good work."
2 Timothy 3:16-17

Learn More!
Appendix 2 on
page 42 for more
information

HABIT 2: Prayer

Prayer is dialogue with our Creator; we were made for a relationship with Him, therefore, **the second habit we need to develop is to regularly talk with Him!**

Using the **ACTS** method, we find a simple way to pray:

A – ADORATION is a reflection of God Himself. Praise Him for His love, His power and majesty, and His wonderful gift of Christ.

C – CONFESSION is admitting your sins to God. Be honest and humble, remembering He knows you and loves you.

T – THANKSGIVING is telling God how grateful you are for everything He has given you (even the unpleasant things!). Your thankfulness will help you see His purpose for your life.

S- SUPPLICATION is making specific requests both for others and for yourself.

HABIT 3:

Living a **SPIRIT-LED** Life

When we surrender to Christ and receive the salvation He has purchased for us, God gives us the Helper, the Holy Spirit. Therefore, the **third habit we need to develop is to listen and obey the Holy Spirit when He tells us what to do!**

WHO IS THE HOLY SPIRIT?

1. The Holy Spirit is a **PERSON** and part of the Trinity.

"I will ask the Father, and He will give you another Advocate to help you and be with you forever – the Spirit of truth." John 14:16, 17a

2. He **CONVICTS** us of sin; He lets us know when we should ask for forgiveness.

"But I tell you the truth, it is for your own good that I am going away. Unless I go away, the Helper will not come to you; but if I go, I will send Him to you. When He comes, He will convict the world of guilt in regard to sin and righteousness and judgment..." John 16:7-8 (NASB)

3. He **GUIDES** us; He gives us wisdom regarding decisions we need to make.

"But when He, the Spirit of truth, comes, He will guide you into all the truth. He will not speak on His own; He will speak only what he hears, and He will tell you what is yet to come." John 16:13

4. He **EMPOWERS**; not only does He tell us what to do, He gives us the ability to do it.

"But you will receive power when the Holy Spirit comes on you; and you will be my witnesses in Jerusalem, and in all Judea and Samaria, and to the ends of the earth." Acts 1:8

"On one occasion, while He was eating with them, **He gave them this command:**

'Do not leave Jerusalem, but wait for the gift My Father promised, which you have heard Me speak about. For John **baptized with water** but in a few days you will be **baptized with the Holy Spirit.'**"

Acts 1:4-5

Learn More!
Appendix 3 on
pages 44 for
more
information

SPIRIT LIFE IN THE CHURCH

At Shady Grove we recognize that God wants everyone to commit to the Body of Christ, world-wide and especially the local church. We live in an age where few people want to be committed to anything... a marriage... a job... our country. This attitude has produced a generation of church shoppers and hoppers! How different this is from the Spirit filled church of the New Testament in which believers were known by love for each other and their commitment to the advancement of the kingdom.

We must be careful to support and encourage our leadership and each other, avoiding gossip and a critical attitude. Sometimes this is a challenge, but as we allow the Holy Spirit to fill our heart, we are able to grow in kindness, tolerance and love.

"As a prisoner for the Lord, then, I urge you to live a life worthy of the calling you have received. Be completely humble and gentle; be patient, bearing with one another in love. Make every effort to keep the unity of the Spirit through the bond of peace." Ephesians 4:1-3

"Finally, brothers and sisters, rejoice! Strive for full restoration, encourage one another, be of one mind, live in peace. And the God of love and peace will be with you." 2 Corinthians 13:11

Now we ask you, brothers and sisters, to acknowledge those who work hard among you, who care for you in the Lord and who admonish you. Hold them in the highest regard in love because of their work. Live in peace with each other." 1 Thessalonians 5:12-13

"A new command I give you: **love one another**. As I have loved you, so **you must love one another**. By this everyone will know that **you are my disciples**, if you love one another." John 13: 34-35

Every day they continued to **meet together** in the temple courts. They broke bread in **their homes and ate together** with glad and sincere hearts, **praising God and enjoying the favor of all the people**. And the Lord added to their numbers daily **all who were being saved**." Acts 2:46-47

Commitments to Unity

- Commit to seeking the **DIRECTION** of the Holy Spirit.
- Commit to **PRAYING** for church ministers, staff and lay leaders.
- Commit to **ZERO-TOLERANCE** of gossip.
- Commit to a **UNIFIED VISION** as we add services and programs.
- Commit to **POSITIVE** talk.
- Commit to **SUPPORTING** instead of second guessing and critiquing.



COMMITMENTS TO UNITY - THE THIRD BULLET POINT ON GOSSIP NEEDS TO BE HANDLED DELICATELY. ALLOW CLASS TO PROCESS WHAT GOSSIP LOOKS LIKE IN THE CHURCH AND HOW WE CAN COMMIT TO UNITY ON THIS POINT PARTICULARLY.



CLARIFY THAT THE TOPIC OF GIVING AND TITHES WILL BE HANDLED IN MORE DETAIL IN TRACK 301.

HABIT 4: GIVING/SERVING

If we want to walk closer with God, **we need to develop the fourth habit of giving!**

Why I Should Give?

1. Giving is the proper response to God's **GENEROSITY** toward us.
2. Giving is an expression of our **GRATITUDE** toward God.
3. Giving begins by **RECEIVING** God's gift of grace.
4. Giving of myself to God is the **FIRST** gift I can offer.
5. Giving my time, talents and resources is how I **SERVE** the body of Christ.
6. Giving of **SERVICE** is how I show the world God's love for them.

"But since **you excel in everything** – in faith, in speech, in knowledge, in **complete earnestness** and in the love we have kindled in you – see that you also **excel in this grace of giving.**"

2 Corinthians 8:7

Some thoughts on giving in the form of a tithe:

God instructed Old Testament believers to give a tithe, or a tenth, because this 10% represented the first, or most important portion of all that they had. The New Testament does not suggest a certain percentage for giving, but simply says for each to give, "in keeping with his income".

• Give according to your income.

"On the first day of every week, each one of you should set aside a sum of money in keeping with your income, saving it up, so that when I come no collections will have to be made." 1 Corinthians 16:2

• It is a blessing when you give.

"...remembering the words the Lord Jesus Himself said: 'It is more blessed to give than to receive.'" Acts 20:35

• When you give freely to God, you receive freely from God.

"One person gives freely, yet gains even more; another withholds unduly, but comes to poverty." Proverbs 11:24

• Seek God when deciding how much to give.

"Each of you should give what you have decided in your heart to give, not reluctantly or under compulsion, for God loves a cheerful giver." 2 Corinthians 9:7



BEFORE BEGINNING THIS SECTION, SHOW VIDEO FOR 201.

GROWING WITH OTHERS

We believe our church will grow larger if we are accomplishing our mission to “reach, teach, give and go in the power and love of Jesus Christ.” At the same time, we know that the only way we can grow big is to become small. Life Groups help make this happen.

Our central focus with Life Groups is:

- We teach people to **GROW** in God's Word and with other believers.
- We value transparency, **CONFIDENTIALITY** and authenticity.
- We encourage the freedom to grow by **CHANGING** groups as needed for the best interest of all group members.
- We acknowledge that **SHARING LIFE** together begins with prayer and the study of God's Word.
- We base these Life Groups on the **EARLY CHURCH** formation as found in Acts 2:42-47.

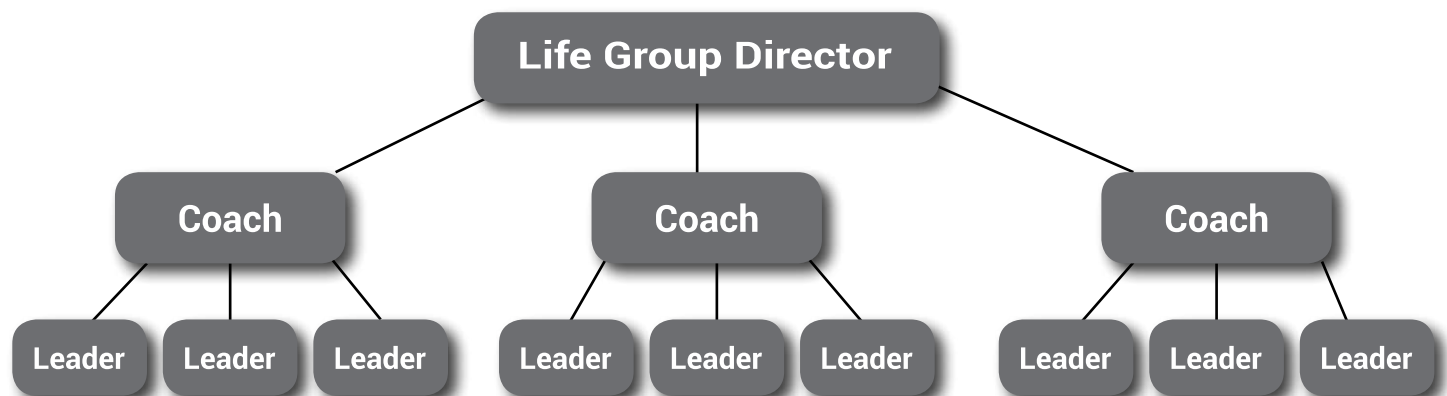
Life Group Leadership:

At Shady Grove, we have created a tiered approach to Life Group leadership. This allows us to effectively support and oversee a large number of participants.

Life Group Pastor – Oversees the overall ministry

Coach – They come alongside and empower 1-3 Life Group leaders by praying for them, supporting their leadership and keeping in contact with them throughout the week.

Life Group Leader – They partner with the Holy Spirit to relationally connect and spiritually move 6-15 people from where they are to where God wants them to be.



"As iron sharpens iron,
so **one man sharpens
another.**" Proverbs 27:1

Life Groups function in three main ways:

1. **FELLOWSHIP** sharing life together through accountability and prayer. The groups are designed to help build long-lasting, Christ-centered, healthy friendships. These friendships can then provide encouragement, correction, and accountability that help us live out our faith and keep us from drifting away from God.

"...I have become all things to all people so that by all possible means I might save some." 1 Corinthians 9:22b

2. **SERVICE** serving as a part of God's mission to the world. At a minimum, group members should be serving each other; ideally they are also serving others outside the group.

"You, my brothers and sisters were called to be free. But do not use your freedom to indulge the sinful nature; rather serve one another humbly in love. For the entire law is fulfilled keeping this one command: Love your neighbor as yourself." Galatians 5:13-15

3. **DEPTH** Biblically growing together and growing deeper through Scripture. The group should be focused on helping each person move one step closer to where God wants them to be.

How Life Groups Work at Shady Grove

New Groups begin three times a year:

- Jan-May = 20-week spring trimester
- June-Aug = 12-week summer trimester
- Sept-Nov = 12-week fall trimester

Running Life Groups in these 12-20 week trimesters provides several advantages:

1. It provides a natural on-ramp for new people to get connected, and a way for people and leaders who want to make a change in their group.
2. It encourages a Life Group to be more intentional as there are 12-20 weeks to grow closer together and closer to God.
3. It allows us to have short breaks during the natural year.

On Campus

Sunday morning – 10:30am

Sunday evening – 5:00pm, 6:00pm

Wednesday evening – 7:00pm

Off Campus

Times and locations are determined by the individual Life Group.

Available Life Groups:

Sunday School

Men's Life Groups

Women's Life Groups

College/Young Adult Life Groups

Students' Life Groups

Couples' Life Groups

Information is available at the Welcome Center located in the lobby of the Worship Center and at shadygrove.net. Times vary, but if you are interested, we will make sure that we find a group that relates with you.

For assistance in finding a group or if you have questions, you can email info@shadygrove.net.

ACTION STEP

Sign up for a Life Group or Sunday School class.



ACTION STEP: LIFE GROUP INFORMATION: TELL THE CLASS THEY CAN TAKE IT HOME, DISCUSS AND PRAY ABOUT IT BEFORE COMPLETING.

LIFE GROUP Information

Are you currently in a Life Group or Sunday School class? Yes _____ No _____

If yes, what is the name of the group or it's current leader: _____

Do you intend to continue with this Life Group/Sunday School? Yes _____ No _____

If no, would you like additional information about the following? _____ Life Group _____ Sunday School

If married, do you want to join a Life Group with your spouse or participate separately?

What is your typical availability (time of day and days of the week) to attend a Life Group?

WHAT NOW?

See Appendices 4-8 to take home the Discover Your Gifts Test, Discover Your Personality Style, Discover Your Passion, Discover Your Natural Abilities and Discover Your Experiences list. These are to be completed when you attend Give 301.

- ☐ I completed the Discover Your Gifts survey.
- ☐ I completed the Discover Your Personality Style form.
- ☐ I completed the Discover Your Natural Abilities survey.
- ☐ I completed the Discover Your Passion form.
- ☐ I completed the Discover my Experiences form.
- ☐ I commit to attend Give 301.

HOSTS

To Have Ready:

- Arrive at least 15 minutes before class begins to set up (debrief with teachers, pray, set up, get paperwork ready)
- Attendance forms, pens, nametags, books
- Arrange and move unused tables and chairs
- Notify teacher if previous class did not complete content, had any issues or questions that need clarity
- Call class to order within five minutes of start time
- Introduce teacher and all hosts. Explain why attendance record needs to be completed.
- Have ready to hand out if requested: Ministry organizational chart, ministry leaders contact list, Ministry Opportunity printable, Discovery Form printable
- Print 201 Action Step page 23 Life Group Information
- Have video clip ready for teacher to use

To DO During or After Class:

- Record attendance, note any new people and any attendees not from previous class
- Anyone making up 301 session from previous class, give certificate of completion if they have completed all four tracks
- Follow up on anyone interested in Life Groups/Sunday School/Bible Studies
- connect them with the right class or group
- record current class or group already attending and note any changes
- Connect interested attendees with ministry contact
- At least one host needs to stay until the last attendee has left, saying goodbye and being available for questions or comments.
- Arrange tables and chairs to original places
- Contact by email, text or phone call a reminder: include thanks for coming, remind them to bring their book next week, and complete discovery forms in appendix.

TEACHERS

Remember that the real purpose of Life Track is to provide a system for people, new and regular attendees to become involved in ministry at Shady Grove. Teachers should be very intentional about helping people connect in Life Track and after Life Track. The function of the host is to prepare each track for class, follow up and prepare for the next class. They are available to answer questions, provide resources and ensure a smooth process for the participants. Please be sure to defer to them throughout the track, when appropriate.

Be sure to mention the Discovery Forms in the Appendix for them to finish.

Unless class begins very late, be sure to include the recommended video. It is only 2 minutes long and will provide a great on-ramp for beginning the class and calling them to order.



LIFE TRACK | SHADY GROVE WESLEYAN CHURCH

GIVE 301

REACH, TEACH, GIVE AND GO IN THE POWER AND LOVE OF JESUS CHRIST



REACH › TEACH › GIVE › GO
in the power and love of Jesus Christ

Give of our time,
resources and talents
by giving inside the
church and outside the
church to impact our
community.

LIFE TRACK Give 301

Service attended: _____ Date: _____

First Name: _____ Last Name: _____

Address: _____ City: _____ Zip: _____

Home Phone: _____ Cell: _____

Email: _____ Email Updates (Circle): Yes or No

Social Media (Circle): Facebook or Twitter Gender (Circle): M or F

Preferred Method of Contact: Phone _____ Email _____ Text _____ If text, cell provider: _____

Have you attended any other weeks of Life Track? Yes _____ No _____

If yes, which week? 101 _____ 201 _____ 301 _____ 401 _____

In Reach 101, we discussed who Shady Grove is, who you are in Christ, and our desire to see this local body of believers reaching out to their circle of influence, sharing the love of Jesus Christ with them.

In Teach 201 we learned how to grow in God's Word and grow with other believers. Your action step was to sign up for a Life Group.



The goal of Give 301 is to help you discover how you are uniquely designed to serve the body of Christ.

WHAT SHOULD I GIVE?

1. **YOURSELF** .

"Therefore, I urge you brothers and sisters, in view of God's mercy, to offer your bodies as a living sacrifice, holy and pleasing to God – this is your true and proper worship. Do not conform to the pattern of this world, but be transformed by the renewing of your mind. Then you will be able to test and approve what God's will is – His good, pleasing and perfect will." Romans 12:1,2

2. Your **TIME** .

"Be very careful, then, how you live - not as unwise but as wise, making the most of every opportunity, because the days are evil." Ephesians 5:15-16

3. Your talents, **GIFTS** and abilities.

"There are different kinds of gifts, but the same Spirit distributes them. There are different kinds of service, but the same Lord. There are different kinds of workings, but in all of them and in everyone it is the same God at work." 1 Corinthians 12:4-6

4. Your **MONEY** .

"Bring the whole tithe into the storehouse, that there may be food in My house. Test Me in this," says the LORD Almighty, "and see if I will not throw open the floodgates of heaven and pour out so much blessing that there will not be room enough to store it." Malachi 3:10

Learn More!
Appendix 9 on
page 59 for
more information

THE TWO ECONOMIES

the economy of the world

In the world's economy, possessions go along with our spiritual lives.

Our possessions reveal what is important to us. So people in Jesus' economy use their possessions to lead their heart to God.

In the final days, God will judge the condition of our heart and the things that we value.

In the world's economy, wealth is viewed as evidence of God's blessing (it makes you secure).

Wealth has the potential to create a false security, shifting our reliance from God to ourselves.

In the world's economy, possessions are owned.

All possessions belong to God, we only manage them. By our nature, we tend to overestimate the value of what we possess, so it is critical that we never possess our possessions, or we will over estimate their value and cling to them.

In the world's economy, giving up our possessions is a sacrifice, or going "without".

The payback is something money cannot buy.

the economy of Jesus

But in God's economy, possessions are at the center of our spiritual lives.

But in God's economy, wealth can be an obstacle to God's grace (it makes you self-reliant).

But in God's economy, possessions are borrowed.

In God's economy, giving up our possessions is an "upgrade".

DISCOVERING YOUR GIVING TYPE

What type of giver are you?

- Do you feel stress when you are asked to contribute money?
- Does your giving flow from a sense of thankfulness for your blessings?
- Is your giving a line item on your budget?
- Do you think pastors spend too much time asking for money?
- Do you occasionally let others know how much you give?
- Are you more likely to give to a cause if you are touched emotionally?
- Do you have an appreciation of the operating expenses of a church or ministry?
- Do you give on a regular basis or only if you feel God has directed you to give on a specific occasion?
- Do you feel your faithfulness in tithing entitles you to some influence at your church?
- Does your spending reflect your passion for Christ? How so?
- How do you determine where your contributions are made?
- Can you link your giving with eternal rewards?
- Do you believe tithing or giving is not relevant to the New Testament Christian?
- Do you believe God has expectations for believers in the area of giving?

Giving Types:

Tight Wad
Generous
Cheerful
Structured
Spontaneous
God-directed
Show-off
Controlling
Reluctant

What type of giver does God want you to be?

DISCOVERING YOUR SPIRITUAL GIFTS

What are Spiritual Gifts?

• A simple definition would be: The **GOD-GIVEN** capacity of every Christian to carry out his or her function in the body of Christ.

• They are given to prepare us for service and to **BUILD UP** the body of Christ.

• Spiritual gifts are divine in that they are given by the **HOLY SPIRIT** to every believer. They are **HUMAN** in that the exercise of each gift will require some form of human involvement.

They differ from human talents and abilities in that they result in spiritual fruit.

Why is it important for every Christian to know his or her Spiritual Gifts?

• Spiritual Gifts are addressed in **FOUR** major portions of Scripture and also are mentioned elsewhere in Scripture. (They are a priority in God's Word)

1 Corinthians 12-14

Romans 12

Ephesians 4

1 Peter 4

• Spiritual Gifts help you find **YOUR PLACE** in ministry and determine your priorities.

• Using your Spiritual Gifts is a matter of **STEWARDSHIP**.

{ **Receive More!** For the Discover Your Spiritual Gifts, please refer to Appendix 4 on page 45. }

DISCOVERING YOUR PASSION

Your heart represents the source of all your motivations – what you love to do and what you care about most. As you mature as a Christian, the desires of your heart will conform to the desires of Christ.

Your heart reveals the real you. Another term for what we are talking about is **PASSION**. There is a reason why you love to do the thing you love to do. When you are doing what you love to do, no one has to motivate you, challenge you or check up on you. The opposite is also true: when you don't have a heart for what you're doing, you are easily discouraged.

Repeatedly the Bible says to "serve the Lord with all your heart"; God want you to serve Him passionately, not out of obligation. People rarely excel at tasks they don't feel passionate about or enjoy doing.

{ **Receive More!** For the Discover Your Passion, please refer to Appendix 5 on page 50 }

"As water reflects a face,
so **one's life reflects
the heart.**"

Proverbs 27:19

*** PSALM 37:4 THE MEANING OF THIS VERSE MAY NEED TO BE DISCUSSED, SO AS TO AVOID MISINTERPRETATION**

"Take **delight in the LORD**, and He will give you the **desires of your heart.**"

Psalms 37:4

*** KEY QUESTION #4 NEEDS TO HAVE SOME EXPLANATION.**

Key Questions:

1. Why do you **SAY** the things you do?
2. Why do you **FEEL** the way you do?
3. Why do you **ACT** the way you do?
4. What makes you angry?

DISCOVERING YOUR NATURAL ABILITIES

Truths about your natural abilities:

1. Most people have **MANY** abilities.
2. People are born with natural **TALENTS**.
3. You may be completely **UNAWARE** of the abilities you possess.

A great resource for learning more about your natural abilities is a book titled, Now, Discover your Strengths written by Marcus Buckingham and Donald Clifton.

{ **Receive More!** For the Discover Your Natural Abilities, please refer to Appendix 6 on page 52 }

"**God** has given each of us the ability to do **certain things well.**"
Romans 12:6 (NLT)

"There are **different abilities** to perform service..."
I Corinthians 12:6 (GNT)

*** DISCOVERING YOUR NATURAL ABILITIES - ENCOURAGE THEM TO PRAY AND THINK ABOUT THEIR TOP THREE.**

DISCOVERING YOUR PERSONALITY

Webster defines “personality” as “the complex characteristics that distinguish an individual.” These characteristics affect the way you think, the way you feel, and the way you act. Your personality characteristics influence your entire life; from decision making to dealing with change, from solving problems to resolving conflict, from engaging people to expressing feelings, from competing to cooperating. Your personality takes center stage in every area of your life!

Examining Four Personality Types

“C” Choleric – Very Direct, Type-A, Task Oriented, Decisive, Organized, Outgoing

“S” Sanguine – Witty, Easygoing, Outgoing, People-Oriented, Life of the Party, Impulsive

“P” Phlegmatic – Peaceful, Stable, Analytical, People-oriented, Introverted, Resists Change

“M” Melancholy – Perfectionist, Competent, Task-Oriented, Goal-oriented, Introverted, Creative

Things to Note:

- Everyone's personality is a mixture of these four types.
- We generally operate out of a **COMBINATION OF TWO** of the four types with one of the two being more dominant.
- There is no right or wrong, better or worse personality type. Each one is created by God and has its own **UNIQUE** place and value.
- We all have **UNDISCOVERED** potential.

The Bible gives us plenty of evidence for the fact that God uses all types of personalities:

- **PETER** was a Sanguine – He often acted and spoke without thinking of the repercussions! Sometimes he spoke in a way that pleased Christ and other times he was rebuked. He is always remembered for his decision to **IMPULSIVELY** step out to walk on water. (Matthew 14:28-30, Mark 9:5-6, John 6:67-69)
- **PAUL** was a Choleric – The same man who persecuted the early church with a single-minded vengeance also wrote much of the New Testament and was one of the greatest missionaries of all times! Paul was **IN CHARGE AND TASK-ORIENTED**. (the entire book of Acts)
- **THOMAS** was a Melancholy – “Doubting Thomas” was a **FACT-BASED** individual, **ORGANIZED** in his thinking and not given to leaps of faith. But when he was convinced, he said to the other disciples, “Let us also go, that we may die with Him.” (John 11:16, John 20:24-29)
- **JOHN** was a Phlegmatic – John was loyal, **PEACE-LOVING**, a true friend. In fact, he referred to himself as “the one Christ loved”. So strong was the relationship between them that Jesus instructed John to care for Mary, his mother, as he was dying on the cross. (John 13:23, John 19:26)

When reflecting on your personality type, consider the following:

- How do I **RELATE** to others?
- How do I **RESPOND** to opportunities?

Receive More! For the Discover Your Personality, please refer to Appendix 7 on page 53

DISCOVERING YOUR EXPERIENCES

Examine at least six kinds of experiences from your past that shaped who you are:

1. **FAMILY** Experiences
2. **EDUCATIONAL** Experiences
3. **WORK** Experiences
4. **SPIRITUAL** Experiences
5. **MINISTRY** Experiences
6. **PAINFUL** Experiences

"And we know that in **all things** God works for the good of **those who love Him**, who have been called according to His **purpose**." Romans 8:28

"Now I **want you to know**, brothers and sisters, that what has happened to me has actually served to **advance the gospel**." Philippians 1:12

The last category, "painful experiences," are often the ones God uses most to prepare us for ministry. God never wastes a hurt and our failures are not fatal! In many cases, your greatest ministry will come out of your greatest hurt.

"He comforts us in all our troubles so that we can comfort others. When others are troubled, we will be able to give them the same comfort God has given us." 2 Corinthians 1:4 (NLT)

Compile your answers from the worksheets you completed, and write your discoveries on the form below.

Receive More! Please refer to Appendix 8 on page 58 for the Discovering Your Experience worksheet.

DISCOVERY Form



DISCOVERY FORM - EXPLAIN THAT THE FORM IS PERSONAL; WHILE WE WOULD LIKE TO HAVE A COPY FOR OUR RECORDS, IF THEY DON'T WANT TO TURN IT IN, THEY DON'T HAVE TO. THE MINISTRY OPPORTUNITY FORM (PAGE 31) IS WHAT WE NEED THEM TO TURN IN AFTER CAREFUL PRAYER AND CONSIDERATION.

MY AREAS OF PASSION ARE:

- 1.
- 2.
- 3.

MY PERSONALITY TYPE IS:

- 1.
- 2.

MY SPIRITUAL GIFTS ARE:

Highest:

- 1.
- 2.
- 3.

Lowest:

- 1.
- 2.
- 3.

MY NATURAL ABILITIES ARE:

- 1.
- 2.
- 3.

ACTION STEP

Ministry Team Opportunities



HOSTS AND TEACHERS NEED AN UPDATED LIST OF THE CONTACT PERSON FOR EACH MINISTRY. TEACHERS, BE SURE TO EXPLAIN THE DIRECTIONS SO THERE IS NO CONFUSION.

Name: _____

Phone: _____

Email: _____

Note any areas you are ALREADY serving with a "S" in the lines provided. Any areas you are INTERESTED in serving, mark with an "I".

NEXT GENERATION:

Children's Ministry

_____ Birth - Kindergarten

_____ 1st-5th _____ Check- In

Student Ministry

_____ Middle School _____ High School _____ Events

GUEST SERVICES:

Greeter Ministry

_____ Guest Services _____ Greeter

Prayer Ministry

_____ Prayer list _____ Prayer team

_____ 8:00am Sun _____ 7:00pm Mon

Usher Ministry

_____ Help guests find seats _____ Offering

Parking Ministry

_____ Visitor parking _____ Directing Cars

Refreshment Ministry

_____ Set up _____ Serve coffee

Visitation Ministry (new guests)

_____ Visit _____ Call _____ Notes

Office Volunteer/Data Entry Ministry

_____ Data entry _____ Answering phones

WORSHIP/TECH

Worship Ministry

_____ Choir _____ Worship _____ Drama

_____ Media _____ Sound _____ Video

_____ Lights _____ Stage design

TRAINED LEADERSHIP

Life Track Ministry

_____ Host

Discipleship Ministry

_____ 101 Discipleship _____ Life Group Leader

Stephen Ministry

_____ Trained as a Stephen Minister

Safety Ministry

_____ Security-assigned areas

Evangelism Ministry

_____ Door to door _____ Call new believers

Servant Ministry

_____ Handy man _____ Prison ministry

_____ Shut-ins _____ "Pass the Plate"

Community Partnership

_____ Colfax Elementary School Partnership

_____ Second Saturday

_____ Shady Grove Wesleyan Preschool

*** some ministry opportunities require a background check & additional training.**

MINISTRY OPPORTUNITIES

NEXT GENERATION TEAM:

Shady Grove Kids

The children's ministry at SGWC is full of opportunities for those people looking to make a difference in the life of a child. Whether it is checking kids in, rocking a baby in the nursery, or teaching a Life Group in our elementary program, we have a spot for you!

Student Ministries

At SGWC, we are passionate about reaching the next generation for Christ. "Station 412" is the name of our student ministry. If you want to invest in the lives of middle school and high school students and have a great time doing it, "Station 412" is the place for you!

GUEST SERVICES:

Welcome Team (Greeters)

This ministry has the privilege of making everyone who steps on our property feel as though we have been waiting for their arrival! If you like meeting new people and making them feel welcome; this is the place for you! Some of the Welcome Team's responsibilities include greeting at key locations and helping guests find their way around our church.

Prayer Team

This ministry is actively engaged in prayer for the services at SGWC. This team provides consistent prayer support for people in the services, in the church, the vision of the church, for our surrounding community and our ministry partners. If you have a passion for praying or intercessory prayer, then this team is for you.

Usher Team

The Usher Team sets the tone for the service as they help people find their seats. They also have the task of minimizing distraction in the worship center so people can focus on hearing what God has to say to them. Some of the team's additional responsibilities are facilitating special services such as communion or baptism and receiving the offering.

Safety Team

The Safety Team focuses on several areas during our Sunday programming: they ensure the safety of our campus, work closely with the ushers to make sure our money is secure, and ensures the safety of the children at Shady Grove Wesleyan Church.

Parking Team

It is true that you only get one chance to make a first impression. That is what this team is all about! Our Parking Team sets the stage for our guests, as they are welcomed onto our church property with a smile...and a parking space!

Visitation Team

We believe following up with new guests is vital to having them come back. So if you are great with people and are not afraid of meeting new people, this ministry may be a perfect fit for you. We send you to visit the home of a new guest who visited SGWC.

Office Volunteer/Data Entry Team

This opportunity is for those administratively gifted individuals who like working behind the scenes to get things done and are available during the week to come in the church office.

Refreshment Team

Do you like coffee? Do you like extending hospitality to people? Come serve at our coffee station.

Set-up/Tear Down (Impact Service in SC)

This team is crucial to the success of getting the Student Center (SC) ready for our Impact service on Sunday, and to get the room ready for our student ministries "Station 412" on Wednesday nights. After the final service, the ministry teams pack up their areas and the team collects all the equipment, putting the chairs back in place. If you love making things happen, then Set-up/Tear-Down Team is for you!

OUTREACH:

Evangelism Ministry

Our neighbors need to realize our church cares for them and invites them to be a part of our church. Many of us will go door-to-door, letting people know that Shady Grove Wesleyan Church is down the road and that they are always welcome to attend.

MINISTRY OPPORTUNITIES CONTINUED

COMMUNITY PARTNERSHIP:

We can make a difference for Christ right in our own neighborhood!

Shady Grove Wesleyan Preschool

SGWP operates on our church campus providing an exceptional learning experience for preschoolers while sharing the love of Jesus with them. The preschool staff finds ways to reach out and encourage their parents as well. Volunteers and givers are so important to the success of this ministry!

Second Saturday

This ministry focuses on the needs of our local community, serving them in a variety of ways. It is designed to provide a monthly opportunity to tangibly show the love of Christ to our neighbors. Come join us every second Saturday!

Colfax Elementary School Partnership

We currently partner with Colfax Elementary in a variety of ways to support the staff, students and their parents. This is usually through short-term projects or events throughout the year.

Servant Ministry

From being a handy man, visiting shut-ins, to inviting new people over for lunch, this ministry is caring about people's everyday needs. You have to have a flexible schedule and be willing to help when called. If that is you, this is your ministry.

Prison Ministry

Shady Grove is involved in outreach at a local detention facility. Once training is completed, you can participate in a monthly worship service designed to reach those who are imprisoned.

WORSHIP/TECH:

Worship Team

Do you have experience singing with a worship team? Maybe you have a gift of playing the guitar or drums. Then let us know so you can help us usher each worship service into the presence of God.

Choir (Celebration Service)

Are you are interested in singing in the choir? Are you interested in being with a great group of people who love Jesus? Then this is the place for you. We could always use more talented singers; please sign up today.

Tech Team

Behind the scenes, the Tech Team helps create an excellent experience during our services. If you are looking for a place to let your inner "AV geek" out, the Tech Team is the opportunity you have been looking for!

TRAINED LEADERSHIP:

Stephen Ministries

Stephen ministers are trained and equipped to provide one-on-one care for people who experience a stressful season of life. This confidential ministry walks along side those in need to listen, encourage and pray with them on a regular basis. Come join our team!

Life Group Leader

A Life Group leader offers a safe and welcoming place for group members to grow in God's Word and with other believers. They provide oversight, leadership, and accountability, while facilitating conversation around Bible study questions provided by the Life Group Director.

WHAT NOW?

Complete Ministry/Giving Opportunities Form

You will be most effective when you use your spiritual gifts and abilities in the area of your heart's desire, and in a way that best expresses your personality and experiences. The better the fit, the more successful you will be.

Giving Opportunities:

- ☐ I commit to reach out.
- ☐ I commit to be in a group to grow spiritually.
- ☐ I commit to give of my time, talent and money.
- ☐ I commit to serve: _____ at Shady Grove.
- ☐ I commit to attend Go 401.

HOSTS

To Have Ready:

- Arrive at least 15 minutes before class begins to set up (debrief with teachers, pray, set up, get paperwork ready)
- Attendance forms, pens, nametags, books
- Arrange and move unused tables and chairs
- Notify teacher if previous class did not complete content, had any issues or questions that need clarity
- Call class to order within five minutes of start time
- Introduce teacher and all hosts. Explain why attendance record needs to be completed.
- Have ready to hand out if requested: Ministry organizational chart, ministry leaders contact list, Discovery Form printable
- Have available 201 Action Step page 23 Life Group Information, 301 Action Step Ministry Opportunity Form
- Have certificate of completion ready
- Have Membership Class sign up sheet ready on each table
- Camera
- List of service opportunities near and far
- Team Trips in the next year
- Have video clip ready for teacher to use

To DO During or After Class:

- Record attendance, note any new people and any attendees from previous class
- Anyone making up 401 session from previous class, give certificate of completion if they have completed all four tracks
- Take class photo (This should be done at the beginning of class)
- Update spreadsheet with participants, attendance record, bio information, ministry related information, etc.
- Follow up on anyone interested in Life Groups/Sunday School/Bible Studies
- connect them with the right class or group
- record current class or group already attending and note any changes
- Follow up on any interested attendees with ministry contact
- At least one host needs to stay until the last attendee has left, saying goodbye and being available for questions or comments.
- Arrange tables and chairs to original places
- Any attendee that missed one or more tracks:
 - note to next host
 - send card to participant with date of next track
 - Make more copies of all printables for next class.

TEACHERS

Remember that the real purpose of Life Track is to provide a system for people, new and regular attendees to become involved in ministry at Shady Grove. Teachers should be very intentional about helping people connect in Life Track and after Life Track. The function of the host is to prepare each track for class, follow up and prepare for the next class. They are available to answer questions, provide resources and ensure a smooth process for the participants. Please be sure to defer to them throughout the track, when appropriate.

Be sure to mention the Life Group Information printable and the Ministry Opportunity Form for them to complete if they haven't already done so.

Remember to announce the next Membership class and refer to the sign up sheet on each table for them to use.

Unless class begins very late, be sure to include the recommended video. It is only 2 minutes long and will provide a great on-ramp for beginning the class and calling them to order.

LIFE TRACK | SHADY GROVE WESLEYAN CHURCH

GO 401

REACH, TEACH, GIVE AND GO IN THE POWER AND LOVE OF JESUS CHRIST



Go. Become people who accept the Great Commission and impact the culture through missions, service and leadership.

LIFE TRACK Go 401

Service attended: _____ Date: _____

First Name: _____ Last Name: _____

Address: _____ City: _____ Zip: _____

Home Phone: _____ Cell: _____

Email: _____ Email Updates (Circle): Yes or No

Social Media (Circle): Facebook or Twitter Gender (Circle): M or F

Preferred Method of Contact: Phone _____ Email _____ Text _____ If text, cell provider: _____

Have you attended any other weeks of Life Track? Yes _____ No _____

If yes, which week? 101 _____ 201 _____ 301 _____ 401 _____

Over the last weeks you have discovered:

In Reach 101, we discussed who Shady Grove is, who you are in Christ, and our desire to see this local body of believers reaching out to their circle of influence, sharing the love of Jesus Christ with them.

In Teach 201 we learned how to grow in God's Word and grow with other believers.

During Give 301 we saw how God created you uniquely to give and reach beyond our church walls to impact our community for Christ. Your action step was to complete the Discovery Forms.



The goal of Go 401 is to help you be involved with the Great Commission locally, nationally and internationally.

WHY "GO":

1. Go and share the **LOVE** of Jesus Christ with those who do not know Him.
2. God has called each of us to be His **WORKERS** in His mission field.

"The harvest is plentiful, but the workers are few." Matthew 9:37

3. You were not created to stay in a **HUDDLE**, but to go get in the game.
4. We desire for our church to be about the **GREAT COMMISSION**, and go where God has commanded us to go.

"Therefore go and make disciples of all nations, baptizing them in the name of the Father, and of the Son and of the Holy Spirit, and teaching them to obey everything I have commanded you. And surely I am with you always, even to the very end of the age." Matthew 28:19-20

"The time is too short and the work is too great to sit on the sidelines."

- Reverend William E. McCumber



HOW TO "GO":

MY STORY - EXPLAIN HOW THE THREE STORIES ARE A SIMPLE, EFFECTIVE WAY OF SHARING THE GOSPEL. GIVE EXAMPLE OF AN INNOVATIVE WAY TO EVANGELIZE/SHARE THE GOSPEL.

- Commit to impact **ONE LIFE** at a time. Who is your "one" person that you will commit to pursue? Invite them to church, invest in their lives, share the message of Jesus Christ, and pray for them.
- Accept personal **RESPONSIBILITY** to reach out. God commands us as Christians to tell others about Jesus.
- Build a personal **RELATIONSHIP** with your "one". People don't want to be a spiritual project; it's about a relationship.
- Share your personal **STORY**.
- o **MY** Story – This is when you share your own story. Talk about your spiritual journey, before you became a Christ follower and how you have been changed.
- o **YOUR** Story – This is when you hear the other person's story. Be a good listener, empathetic, caring and encouraging.
- o **GOD'S** Story - This is when you share God's love and His plan of salvation.
- Give a personal **INVITATION**. Invite everyone, but always care about the person more than filling our church.
- Walk with them through their **JOURNEY**, even if it's messy. People disconnect when they think your only focus was the invitation and nothing more. Start sharing about **JESUS** today.
- Become Missional (on the move) in your Life Group! As you study and learn about Christ, also be active. Realize many people in our community are hurting and need help physically, emotionally and spiritually. Always help your Life Group to not be in a "huddle", but to get in the game. Reach out and be missional. If we don't have a spot that seems a good fit for you, start one!

Explain through **SCRIPTURE** how to accept Christ.

"For God so **loved the world** that He **gave His one and only son**, that whoever believes in Him shall not perish, but **have eternal life**."

John 3:16

- *"He gave His only son" – He **GAVE** His life for us.*
- *"Whoever believes in Him" – We **REPENT** of our sins.*
- *"Shall have eternal life" – He **FORGIVES** us.*

WHERE TO "GO":

- Go locally – The mission field is not just overseas, it's right here in our **NEIGHBORHOOD**.
- Go nationally – The mission field is not just overseas, many people in the **UNITED STATES** are lost and without a Savior.
- Go internationally – Many countries around this world need a Savior. Get out of your **COMFORT ZONE** and go; it will change your life.
- Not everyone is a **LEADER**, but everyone can make an impact.
- Plug yourself into serving.
- Help plug others into a ministry.
- Take steps of faith daily to impact beyond our walls.



WHERE TO "GO" - ADDRESS THE THINGS THAT HOLD US BACK FROM "GOING"; EXAMPLE: LACK OF INTEREST, FEAR, LACK OF CONFIDENCE, LACK OF FINANCES, LACK OF TIME, ETC. FOR EACH BULLET, SHARE THE CURRENT MINISTRY OPPORTUNITIES AVAILABLE, LOCALLY, NATIONALLY AND INTERNATIONALLY. HIGHLIGHT DIFFERENT ONES WITH A PERSONAL OR SHADY GROVE EXPERIENCE. EXAMPLE: "LAST MONTH THE SHADY GROVE PRISON MINISTRY TEAM SAW EIGHT PEOPLE ACCEPT CHRIST!" VARY THESE HIGHLIGHTED AREAS FROM MONTH TO MONTH.

"The human body **has many parts**, but the many parts **make up one whole body**. So it is with the body of Christ..."

I Corinthians 12:12 (NLT)



ACTION STEP - HAND OUT CURRENT MISSION BROCHURE AND MINISTRY OPPORTUNITY FORM.

ACTION STEP

Sign up for an outreach opportunity or mission trip experience.

For some of you the areas in which you want to serve are clear; for others, maybe it's not so clear. The key to finding the perfect serving niche is found in two words: Start Experimenting. Don't sit and wait for the perfect opportunity to come your way; jump in and see what God does!

I Completed:

- ☐ Reach 101 Month: _____ Year: _____ Who have you shared your story with?
- ☐ Teach 201 Month: _____ Year: _____ What Life Group are you in?
- ☐ Give 301 Month: _____ Year: _____ Where are you serving at Shady Grove?
- ☐ Go 401 Month: _____ Year: _____ How are you being "missional"?

WHAT NOW?

Become a member of Shady Grove Wesleyan Church.

In the membership class, we cover what the Wesleyan Church is all about, key components of the Wesleyan doctrine and what a commitment of membership at Shady Grove Church means for you.

We offer membership classes on a regular basis. See your host for the date of the next available class.



THANK THEM FOR ATTENDING LIFE TRACK. ENCOURAGE THEM TO MAKE UP ANY MISSED TRACKS. ANNOUNCE THE NEXT MEMBERSHIP CLASS AND THE MEMBERSHIP PROCESS. ENCOURAGE THEM TO COMPLETE THE DISCOVERY FORMS, LIFE GROUP INFORMATION SHEET, AND MINISTRY OPPORTUNITY SHEET IF THEY HAVE NOT ALREADY DONE SO. HAND OUT CERTIFICATES OF COMPLETION.

Welcome to the Team here at Shady Grove Wesleyan Church!

Certificate of Completion
LIFE TRACK



has hereby completed Reach 101, Teach
201, Give 301 and Go 401 of Life Track on
this _____ day of _____, 20____.

Pastor Nate Kingsbury
Pastor Nate Kingsbury



REACH › TEACH › GIVE › GO
in the power and love of Jesus Christ

APPENDIX 1:

How to understand God's Word:

Hear the Word

"So then faith comes by hearing, and hearing by the word of God." Romans 10:17 (NKJV)

Read the Word

"Blessed is he who reads and those who hear the words of the prophecy and heeds the things written in it; for the time is near." Revelation 1:3 (NASB)

Study God's Word

"...They received the word with all readiness of mind and searched the Scriptures daily to find out whether these things were true." Acts 17:11 (NKJV)

Memorize the Word

"Guard My instructions as you guard your own eyes. Tie them on your fingers as a reminder. Write them deep within your heart." Proverbs 7:2-3 (NLT)

Meditate on the Word

"but whose delight is in the law of the LORD, and who meditates on His law day and night. That person is like a tree planted by streams of water, which yields its fruit in season and whose leaf does not wither – whatever they do prospers." Psalms 1:2-3

(Meditation is focused thinking about a Bible verse in order to discover how to apply its truth to life.)

Receive the Word

"Still other seed fell on good soil, where it produced a crop – a hundred, sixty or thirty times what was sown." Matthew 13:8

Apply the Word

"Now that you know these things, you will be blessed if you do them." John 13:17

"Do not merely listen to the Word, and so deceive yourselves. Do what it says." James 1:22

Appendix 1 continued

{ BIBLE Q & A }

what is the bible?

What is the Bible?

- A road Map – to show us the way
- A love Letter – to express God's love for us
- A Seed – to help us reproduce God in others
- A Sword – to war against the forces of evil

The Bible is the inspired word of God. It consists of 66 books with 40 different authors. It was originally written in three languages but has been translated into 2000 languages. The writing of the Bible took place over 1000 years and it is still the best-selling book of all time.

The Bible shows us who God is and what His eternal plan is and has always been. We also learn how we fit into that plan. The Bible teaches us how to get closer to God and as we become more like Him, we find our questions answered!

Prep tips for your time with God

Calm down. Let yourself stop and focus. This discipline is one of the hardest because either you will push forward or decide to postpone it to another day. This is often the time when Satan hits you the hardest. Here are a few steps to take as you prepare for your time in God's presence.

- Write down anything that you have to get done later in the day or week. These are the things that will distract you from what God wants to teach you. Be careful not to begin to accomplish the things on your list, leave them for later.
- Get comfortable. Find a place where you can sit and relax with no distractions. Having something to drink may help you to stay focused.
- Choose a time you are most alert.
- Use your resources – Bible, notepad, ipod, – whatever you need for your time with God.
- Pray against Satan and his distractions. Satan hates when we spend time focusing on God. This is one of the reasons you may struggle with your quiet time with God.
- Ask God to quiet your mind and your heart as you begin to focus.
- Be yourself. Talk with God as you would a trusted friend.
- Wait on God. Listen for God and what He wants you to hear from Him today.

APPENDIX 2

Other prayer Tips: **Prayer Calendar**

A prayer calendar allows you to write down different things to pray about each day and spend solid time focusing on important areas. Here are a few examples to get started. Use this as a guide when you pray.

MONDAY

1. FAMILY

2.

3.

4.

5.

6.

7.

TUESDAY

1. WORK

2.

3.

4.

5.

6.

7.

WEDNESDAY

1. FRIENDS

2.

3.

4.

5.

6.

7.

THURSDAY

1. MINISTRY

2.

3.

4.

5.

6.

7.

FRIDAY

1. NATION

2.

3.

4.

5.

6.

7.

SATURDAY

1. MY NEIGHBOR

2.

3.

4.

5.

6.

7.

Other Prayer Tips: **Prayer Requests**

Prayer requests is a tool to record the needs of people who ask you to pray for them. Keep track of the requests and write down the way God answers.

NAME	DATE:	REASON:	ANSWER:
1.			
2.			
3.			
4.			
5.			
6.			
7.			
8.			
9.			
10.			

Unsaved Friends & Family

Unsaved friends and family should burden each of us. Just the thought of our friends and family not knowing Jesus should keep us up at night. Start praying today for your friends and family that do not know Jesus Christ.

NAME	REASON:
1.	
2.	
3.	
4.	
5.	
6.	
7.	
8.	
9.	
10.	

APPENDIX 3

Other Tools: **Fasting**

Fasting is a tool believers use to maintain focused attention on God. While it is not commanded in the Bible, there are Scripture references to Jesus and His followers taking part in fasts. A fast means that you refrain from something (usually food, but not always) for a specific period of time. During this time, you pray and listen carefully to God; it requires dependence and disciplined attention to Him.

A fast can be as short as a half a day or as long as several weeks or even months. The thing fasted and the duration of the fast is up to the individual believer. Whatever you choose to fast from, remember to use the time replacing what you are fasting from, with prayer, reading Scripture and listening to God.

Here is a list of suggestions for fasting. This is not an inclusive list; you can fast from whatever God lays on your heart.

- Cell phone for a specific time of day
- Internet usage
- Social media (Facebook/Twitter)
- TV show
- A meal
- All food except clear liquids
- Desserts/sweets
- Coffee/soft drinks

What are you committing to fast?	Commitment Time Frame
1.	From: _____ To: _____
2.	From: _____ To: _____
3.	From: _____ To: _____
4.	From: _____ To: _____
5.	From: _____ To: _____

APPENDIX 4

Discover Your **Spiritual Gifts**

For each statement, write the number that corresponds with what fits you best.

3—that's me! 2—that's probably me. 1—that's probably not me. 0—that's definitely not me!

1. ____ I try to worry more about the needs of others than my own needs.
2. ____ People come to me when they need to talk about a problem.
3. ____ I would like to give money to those in need.
4. ____ I enjoy explaining the Bible to others.
5. ____ I like to try to help others know God better.
6. ____ I don't mind being seen with people who aren't that popular.
7. ____ When I see needy people on cold nights, I really feel like inviting them to my home.
8. ____ On Friday night, I am usually the one who decides where we go and what we do.
9. ____ I like to tell others about my relationship with God.
10. ____ I have confidence that God will get me through both good and bad times.
11. ____ I like doing jobs that most other people don't want to do.
12. ____ I am known for my positive attitude.
13. ____ I get a real kick out of giving stuff away.
14. ____ I like studying the Bible so I can explain it to others.
15. ____ I like to pray for others.
16. ____ I would like to work with people with disabilities.
17. ____ I like having friends stay the night at my house.
18. ____ I like to organize and motivate groups of people.
19. ____ I can sometimes direct conversations toward God in a comfortable way.
20. ____ I believe God can do things that seem impossible.
21. ____ I have helped other people so their work is easier.
22. ____ I like to help sad people feel better.
23. ____ I try to be smart with my money so that I can give extra money to people who need it.
24. ____ I like learning and studying the Bible.
25. ____ I would love to lead a Bible study with my friends.
26. ____ I feel very sympathetic toward the needy.
27. ____ I don't feel disrupted when there are guests at my house.
28. ____ I have encouraged others to finish a project.
29. ____ I would like to help someone else become a Christian.
30. ____ I have confidence that God will keep His promises even when things are bad.
31. ____ I don't mind doing little jobs that other people don't consider important.
32. ____ I can encourage others through what I say.
33. ____ I know that God will meet my needs, so I want to give freely to others.
34. ____ I can show others what many verses in the Bible mean.
35. ____ I like to serve people to show that God cares for them.
36. ____ If a friend is sick, I call to see how they are doing.
37. ____ I like having company at my house.
38. ____ I would like to lead, inspire and motivate people to do God's work.
39. ____ I would like to tell others that Jesus is the Savior and help them see the positive results.
40. ____ I trust that I can call on God and know that He will be there when impossible situations happen.
41. ____ Sometimes when I do jobs, nobody notices, but I don't mind.
42. ____ I like it when people are happier after I have talked to them.
43. ____ I have given away some of my money or belongings to those in need.
44. ____ I think that I could help others find answers on their own.
45. ____ I would like to help bring people back to Christ who have wandered away from Him.
46. ____ When I see a homeless person, I really want to help.
47. ____ My friends come over to my house because they feel comfortable there.
48. ____ When I'm in a group, sometimes people look to me to take charge.
49. ____ I take any opportunity I can to tell people about Christ.
50. ____ When everything looks bad, I can still trust God.

tabulation on next page >>

Appendix 4 continued

SPIRITUAL GIFTS ASSESSMENT

Tabulation

Put your responses to each previous statement (0-3) in the box below with the corresponding number—response 1 goes in box 1, and so on. Then add up each row across and put the total in the box.

					Total	Gift
1	11	21	31	41		A
2	12	22	32	42		B
3	13	23	33	43		C
4	14	24	34	44		D
5	15	25	35	45		E
6	16	26	36	46		F
7	17	27	37	47		G
8	18	28	38	48		H
9	19	29	39	49		I
10	20	30	40	50		J

Explanation:

Gift A: **Helping**—the ability to assist and serve other people.

Gift B: **Encouraging**—the ability to support people and to help them regain hope.

Gift C: **Giving**—the ability to give your money and other resources to be used for God's work.

Gift D: **Teaching**—the ability to teach the Bible in such a way that people learn and grow.

Gift E: **Pastoring**—the ability to effectively guide and care for people in their walk with God.

Gift F: **Mercy**—the gift to act out of compassion toward those who are suffering.

Gift G: **Hospitality**—the gift of being friendly and generous to guests.

Gift H: **Leading**—the ability to motivate others to use their spiritual gifts and to do their best for the work of the Lord.

Gift I: **Evangelism**—the ability to help others come to know Jesus personally.

Gift J: **Faith**—the ability to have a confident belief that God will always do what is the very best.

Appendix 4 continued

ASSESSMENT

If the score in the Total box is:

12–15—there is a strong likelihood that God has blessed you with this spiritual gift.

8–11—there is a reasonable possibility that God has blessed you with this spiritual gift.

4–7—God might be developing this gift in you.

0–4—your spiritual gifts are probably in a different area than this.

Three gifts receiving the highest score:

1.	2.	3.
_____	_____	_____

Three gifts receiving the lowest score:

1.	2.	3.
_____	_____	_____

GIFT DEFINITIONS AND SCRIPTURE REFERENCES

The following contains suggested definitions of the spiritual gifts. While not meant to be dogmatic or final, these definitions and supporting Scriptures do correspond to characteristics of the gifts as expressed in the Shady Grove Spiritual Gifts Questionnaire.

- | | |
|----|--|
| A. | <p>HELPING – The ability to invest the talents one has in the life and ministry of other members of the body, thus enabling those others to increase the effectiveness of their own spiritual gifts.</p> <p>Mark 15:40-41 Acts 9:36
Romans 16:1-2 1 Corinthians 12:28</p> |
| B. | <p>ENCOURAGEMENT – The ability to minister words of encouragement, consolation, comfort and motivation from God's Word to help others complete their tasks and be all that God wants them to be.</p> <p>Acts 4:32-37 Acts 14:22
Romans 12:8 1 Timothy 4:13
Hebrews 10:24-25</p> |

Appendix 4 continued

- C. **GIVING** – The ability to contribute material resources to the work of the Lord with liberality and cheerfulness.
- | | |
|---------------------|---------------------|
| Mark 12:41-44 | Romans 12:8 |
| 2 Corinthians 8:1-7 | 2 Corinthians 9:2-8 |
- D. **TEACHING** – The ability to employ a logical, systematic approach to biblical study and to communicate information relevant to the health and ministry of the body and its members in such a way that others will learn.
- | | |
|---------------------|-------------------|
| Acts 18:24-28 | Acts 20:20-21 |
| 1 Corinthians 12:28 | Ephesians 4:11-14 |
- E. **PASTOR** – The ability to assume a long-term personal responsibility for the spiritual welfare of a group of believers.
- | | |
|-----------------|-------------------|
| John 10:1-18 | Ephesians 4:11-14 |
| 1 Timothy 3:1-7 | 1 Peter 5:1-3 |
- F. **MERCY** – The ability to feel genuine empathy and compassion for individuals who suffer distressing physical, mental or emotional problems and to translate that compassion into cheerfully-done deeds which reflect Christ's love and alleviate the suffering.
- | | |
|----------------------|-----------|
| Matthew 9:35, 36 | Mark 9:41 |
| 1 Thessalonians 5:14 | |
- G. **HOSPITALITY** – The ability to provide an open house and a warm welcome to those in need of food and lodging.
- | | |
|---------------|----------------|
| Acts 16:14-15 | Romans 12:9-13 |
| Romans 16:23 | Hebrews 13:1-2 |
| 1 Peter 4:9 | |
- H. **LEADERSHIP** – The ability to set goals in accordance with God's purpose for the future and to communicate those goals to others in such a way that they voluntarily and harmoniously work together to accomplish those goals for the glory of God.
- | | |
|----------------|---------------|
| Acts 15:7-11 | Romans 12:8 |
| 1 Timothy 5:17 | Hebrews 13:17 |
- I. **EVANGELISM** – The ability to share the gospel with unbelievers in such a way that men and women become Jesus' disciples and responsible members of the body of Christ.
- | | |
|-------------------|---------------|
| Acts 8:5-6 | Acts 8:26-40 |
| Acts 14:21 | Acts 21:8 |
| Ephesians 4:11-14 | 2 Timothy 4:5 |
- J. **FAITH** – The ability to discern with extraordinary confidence the will and purpose of God, and to propel the body of believers into actively claiming the promises of God.
- | | |
|--------------------|----------------|
| Acts 11:22-24 | Romans 4:18-21 |
| 1 Corinthians 12:9 | Hebrews 11 |

Appendix 4 continued

The following is a practical guide to matching spiritual gifts with possible ministries at Shady Grove Wesleyan Church.

A. HELPS/SERVICE

Communion Preparation
 Women's Ministry
 Nursery
 Men's Ministry
 Office Volunteer
 Landscape & Yard Work
 Transportation
 Phone Calling
 Cooking
 Library Help
 Care Card Ministry
 Sunday School teacher
 Photographer
 Drama
 Life Group Leader
 Sound Technician
 Grounds
 Nursing Home Visitation
 Visitation team
 Offering Teller
 Usher
 Funeral dinners
 Greeter
 Youth leader
 Children's Leader
 Maintenance & Repair
 Guest Follow-up
 Worship Folder Help
 Parking Lot

B. EXHORTATION

Boards & Committees
 Sunday School Teacher
 Children's leader
 Discipleship
 Visitation
 Greeter
 Counseling Ministries
 Usher

C. GIVING

Support Mission Work
 Support Building Fund
 Fund Raising
 Community Partnership
 Church Board
 Give to Benevolence Fund

D. TEACHING

Sunday School Teacher
 Outreach
 Discipleship
 Youth Leader
 Life Group Leader
 Children's Leader

E. PASTOR/SHEPHERD

Discipleship
 Life Group Leader
 Visitation
 Outreach
 Training
 Follow-up
 Youth Leader
 Preaching

F. MERCY

Life Track
 Counseling
 Nursing Home Visitation
 Stephen Ministry
 Hospital Visitation

G. HOSPITALITY

Usher
 Greeter
 Welcome Center Host
 Funeral Dinner Helper
 Pass the Plate
 Entertain Church Guest in Home

H. LEADERSHIP

Boards & Committees
 Greeter Team Leader
 Life Group Leader
 Usher Team Leader
 Student Ministry Leader
 Singles Group Leader
 Children's Leader

I. EVANGELISM

Evangelism visits
 New to Christ visit
 Class Teacher
 Life Group Leader

J. FAITH

Prayer Ministries
 Prayer Partner
 Nominating Committee
 Healing Ministry
 Altar Counselor

APPENDIX 5

Discover Your Passion

The objective of this tool is to help you uncover the thing(s) about which you are passionate. We would encourage you to look at the questions below. Perhaps jot down a note or two under each question to spark your memory.

1. Think back to the time when you were a child. What was something you really enjoyed doing that seemed to be a bit unique to you?
2. Name people who have had significant influence on your life. Why do you think they had the impact they did?
3. If we were to ask those who are close to you what matters deeply to you, what would they say?
4. If someone were to give you \$10 million to spend towards changing/fixing something in our society, on what would you spend the money?

Appendix 5 continued

5. 50-60 years from now, when you look back on your life, what is an area in which you would like to say you made a difference?
6. What subject matter would most likely keep you talking late into the night?
7. Name two or three things about which someone close to you would say you are most passionate:
8. Name two or three things about which **YOU** feel you are most passionate:

APPENDIX 6

Discover Your Natural Abilities

Check the box next to the words that best describe your natural abilities:

- ☐ **Motivation:** To recruit, enlist and motivate people to get involved
- ☐ **Performance:** Drama, Acting, Singing, Speaking
- ☐ **Language:** To translate, speak or write in other languages
- ☐ **Teaching:** To cause or help someone to learn
- ☐ **Writing:** To express ideas in written form
- ☐ **Editing:** To proofread or rewrite
- ☐ **Management:** To supervise people to accomplish a specific task
- ☐ **Analysis:** To analyze data and reach conclusions
- ☐ **Research:** To collect data
- ☐ **Counseling:** To guide with sensitivity
- ☐ **Encouragement:** To listen, support and affirm
- ☐ **Planning:** To create strategy, tactical planning
- ☐ **Resourcing:** To search and find relevant materials and needed resources
- ☐ **Financial:** To work with financial planning, data and record keeping
- ☐ **Welcoming:** To convey warmth, develop rapport and make others feel comfortable
- ☐ **Musical:** To sing or play musical instruments
- ☐ **Interior Design:** To plan and execute set up for services and events
- ☐ **Office Admin:** To execute office related tasks
- ☐ **Critical Thinking:** To identify, assess and solve problems
- ☐ **Technology:** To evaluate current technology options. To operate technical equipment
- ☐ **Leadership:** To lead by example. To train, coach, mentor others to accomplish an objective.
- ☐ **Art:** To create, design, produce visual art
- ☐ **Athletics:** To coach or participate in a sport
- ☐ **Maintenance:** To repair, restore, maintain, care for physical facilities
- ☐ **Hospitality:** To prepare and serve food for others
- ☐ **Social:** To interact comfortably with other people
- ☐ **Conflict Resolution:** To handle complaints and unhappy people with care and maturity
- ☐ **Promotion:** To advertise and promote events and activities
- ☐ **Mechanical:** To operate tools, machinery and equipment
- ☐ **Transportation:** To operate vehicles, to provide transportation
- ☐ **Comfort:** To bring comfort to hurting people, with words, food, visits

Of the abilities you checked above, list your top three:

1.

2.

3.

APPENDIX 7

Discover Your Personality Profile

Directions--*In each of the following rows of four words across, place an X in front of the one word that most often applies to you. Continue through all forty lines; be sure each number is marked. If you are not sure which word "most applies," ask a spouse or a friend, and think of what your answer would have been when you were a child.*

STRENGTHS

- | | | | | |
|-----|--|---|---------------------------------------|--|
| 1. | <input type="checkbox"/> Adventurous | <input type="checkbox"/> Adaptable | <input type="checkbox"/> Animated | <input type="checkbox"/> Analytical |
| 2. | <input type="checkbox"/> Persistent | <input type="checkbox"/> Playful | <input type="checkbox"/> Persuasive | <input type="checkbox"/> Peaceful |
| 3. | <input type="checkbox"/> Submissive | <input type="checkbox"/> Self-sacrificing | <input type="checkbox"/> Sociable | <input type="checkbox"/> Strong-willed |
| 4. | <input type="checkbox"/> Considerate | <input type="checkbox"/> Controlled | <input type="checkbox"/> Competitive | <input type="checkbox"/> Convincing |
| 5. | <input type="checkbox"/> Refreshing | <input type="checkbox"/> Respectful | <input type="checkbox"/> Reserved | <input type="checkbox"/> Resourceful |
| 6. | <input type="checkbox"/> Satisfied | <input type="checkbox"/> Sensitive | <input type="checkbox"/> Self-reliant | <input type="checkbox"/> Spirited |
| 7. | <input type="checkbox"/> Planner | <input type="checkbox"/> Patient | <input type="checkbox"/> Positive | <input type="checkbox"/> Promoter |
| 8. | <input type="checkbox"/> Sure | <input type="checkbox"/> Spontaneous | <input type="checkbox"/> Scheduled | <input type="checkbox"/> Shy |
| 9. | <input type="checkbox"/> Orderly | <input type="checkbox"/> Obliging | <input type="checkbox"/> Outspoken | <input type="checkbox"/> Optimistic |
| 10. | <input type="checkbox"/> Friendly | <input type="checkbox"/> Faithful | <input type="checkbox"/> Funny | <input type="checkbox"/> Forceful |
| 11. | <input type="checkbox"/> Daring | <input type="checkbox"/> Delightful | <input type="checkbox"/> Diplomatic | <input type="checkbox"/> Detailed |
| 12. | <input type="checkbox"/> Cheerful | <input type="checkbox"/> Consistent | <input type="checkbox"/> Cultured | <input type="checkbox"/> Confident |
| 13. | <input type="checkbox"/> Idealistic | <input type="checkbox"/> Independent | <input type="checkbox"/> Inoffensive | <input type="checkbox"/> Inspiring |
| 14. | <input type="checkbox"/> Demonstrative | <input type="checkbox"/> Decisive | <input type="checkbox"/> Dry humor | <input type="checkbox"/> Deep |
| 15. | <input type="checkbox"/> Mediator | <input type="checkbox"/> Musical | <input type="checkbox"/> Mover | <input type="checkbox"/> Mixes easily |
| 16. | <input type="checkbox"/> Thoughtful | <input type="checkbox"/> Tenacious | <input type="checkbox"/> Talker | <input type="checkbox"/> Tolerant |
| 17. | <input type="checkbox"/> Listener | <input type="checkbox"/> Loyal | <input type="checkbox"/> Leader | <input type="checkbox"/> Lively |
| 18. | <input type="checkbox"/> Contented | <input type="checkbox"/> Chief | <input type="checkbox"/> Chartmaker | <input type="checkbox"/> Cute |
| 19. | <input type="checkbox"/> Perfectionist | <input type="checkbox"/> Pleasant | <input type="checkbox"/> Productive | <input type="checkbox"/> Popular |
| 20. | <input type="checkbox"/> Bouncy | <input type="checkbox"/> Bold | <input type="checkbox"/> Behaved | <input type="checkbox"/> Balanced |

Appendix 7 continued

WEAKNESSES

- | | | | | |
|-----|---|--|---|---|
| 21. | <input type="checkbox"/> Blank | <input type="checkbox"/> Bashful | <input type="checkbox"/> Brassy | <input type="checkbox"/> Bossy |
| 22. | <input type="checkbox"/> Undisciplined | <input type="checkbox"/> Unsympathetic | <input type="checkbox"/> Unenthusiastic | <input type="checkbox"/> Unforgiving |
| 23. | <input type="checkbox"/> Reticent | <input type="checkbox"/> Resentful | <input type="checkbox"/> Resistant | <input type="checkbox"/> Repetitious |
| 24. | <input type="checkbox"/> Fussy | <input type="checkbox"/> Fearful | <input type="checkbox"/> Forgetful | <input type="checkbox"/> Frank |
| 25. | <input type="checkbox"/> Impatient | <input type="checkbox"/> Insecure | <input type="checkbox"/> Indecisive | <input type="checkbox"/> Interrupts |
| 26. | <input type="checkbox"/> Unpopular | <input type="checkbox"/> Uninvolved | <input type="checkbox"/> Unpredictable | <input type="checkbox"/> Unaffectionate |
| 27. | <input type="checkbox"/> Headstrong | <input type="checkbox"/> Haphazard | <input type="checkbox"/> Hard to please | <input type="checkbox"/> Hesitant |
| 28. | <input type="checkbox"/> Plain | <input type="checkbox"/> Pessimistic | <input type="checkbox"/> Proud | <input type="checkbox"/> Permissive |
| 29. | <input type="checkbox"/> Angered easily | <input type="checkbox"/> Aimless | <input type="checkbox"/> Argumentative | <input type="checkbox"/> Alienated |
| 30. | <input type="checkbox"/> Naive | <input type="checkbox"/> Negative attitude | <input type="checkbox"/> Nervy | <input type="checkbox"/> Nonchalant |
| 31. | <input type="checkbox"/> Worrier | <input type="checkbox"/> Withdrawn | <input type="checkbox"/> Workaholic | <input type="checkbox"/> Wants credit |
| 32. | <input type="checkbox"/> Too sensitive | <input type="checkbox"/> Tactless | <input type="checkbox"/> Timid | <input type="checkbox"/> Talkative |
| 33. | <input type="checkbox"/> Doubtful | <input type="checkbox"/> Disorganized | <input type="checkbox"/> Domineering | <input type="checkbox"/> Depressed |
| 34. | <input type="checkbox"/> Inconsistent | <input type="checkbox"/> Introvert | <input type="checkbox"/> Intolerant | <input type="checkbox"/> Indifferent |
| 35. | <input type="checkbox"/> Messy | <input type="checkbox"/> Moody | <input type="checkbox"/> mumbles | <input type="checkbox"/> Manipulative |
| 36. | <input type="checkbox"/> Slow | <input type="checkbox"/> Stubborn | <input type="checkbox"/> Show-off | <input type="checkbox"/> Skeptical |
| 37. | <input type="checkbox"/> Loner | <input type="checkbox"/> Lord over | <input type="checkbox"/> Lazy | <input type="checkbox"/> Loud |
| 38. | <input type="checkbox"/> Sluggish | <input type="checkbox"/> Suspicious | <input type="checkbox"/> Short-tempered | <input type="checkbox"/> Scatterbrained |
| 39. | <input type="checkbox"/> Revengeful | <input type="checkbox"/> Restless | <input type="checkbox"/> Reluctant | <input type="checkbox"/> Rash |
| 40. | <input type="checkbox"/> Compromising | <input type="checkbox"/> Critical | <input type="checkbox"/> Crafty | <input type="checkbox"/> Changeable |

Appendix 7 continued

{ Personality Scoring Sheet }

Now transfer all your X's to the corresponding words on the Personality Scoring Sheet and add up your totals. For example, if you checked Animated on the profile, check it on the scoring sheet.

Strengths

	Popular Sanguine	Powerful Choleric	Perfect Melancholy	Peaceful Phlegmatic
1.	<input type="checkbox"/> Animated	<input type="checkbox"/> Adventurous	<input type="checkbox"/> Analytical	<input type="checkbox"/> Adaptable
2.	<input type="checkbox"/> Playful	<input type="checkbox"/> Persuasive	<input type="checkbox"/> Persistent	<input type="checkbox"/> Peaceful
3.	<input type="checkbox"/> Sociable	<input type="checkbox"/> Strong-willed	<input type="checkbox"/> Self-sacrificing	<input type="checkbox"/> Submissive
4.	<input type="checkbox"/> Convincing	<input type="checkbox"/> Competitive	<input type="checkbox"/> Considerate	<input type="checkbox"/> Controlled
5.	<input type="checkbox"/> Refreshing	<input type="checkbox"/> Resourceful	<input type="checkbox"/> Respectful	<input type="checkbox"/> Reserved
6.	<input type="checkbox"/> Spirited	<input type="checkbox"/> Self-reliant	<input type="checkbox"/> Sensitive	<input type="checkbox"/> Satisfied
7.	<input type="checkbox"/> Promoter	<input type="checkbox"/> Positive	<input type="checkbox"/> Planner	<input type="checkbox"/> Patient
8.	<input type="checkbox"/> Spontaneous	<input type="checkbox"/> Sure	<input type="checkbox"/> Scheduled	<input type="checkbox"/> Shy
9.	<input type="checkbox"/> Optimistic	<input type="checkbox"/> Outspoken	<input type="checkbox"/> Orderly	<input type="checkbox"/> Obliging
10.	<input type="checkbox"/> Funny	<input type="checkbox"/> Forceful	<input type="checkbox"/> Faithful	<input type="checkbox"/> Friendly
11.	<input type="checkbox"/> Delightful	<input type="checkbox"/> Daring	<input type="checkbox"/> Detailed	<input type="checkbox"/> Diplomatic
12.	<input type="checkbox"/> Cheerful	<input type="checkbox"/> Confident	<input type="checkbox"/> Cultured	<input type="checkbox"/> Consistent
13.	<input type="checkbox"/> Inspiring	<input type="checkbox"/> Independent	<input type="checkbox"/> Idealistic	<input type="checkbox"/> Inoffensive
14.	<input type="checkbox"/> Demonstrative	<input type="checkbox"/> Decisive	<input type="checkbox"/> Deep	<input type="checkbox"/> Dry humor
15.	<input type="checkbox"/> Mixes easily	<input type="checkbox"/> Mover	<input type="checkbox"/> Musical	<input type="checkbox"/> Mediator
16.	<input type="checkbox"/> Talker	<input type="checkbox"/> Tenacious	<input type="checkbox"/> Thoughtful	<input type="checkbox"/> Tolerant
17.	<input type="checkbox"/> Lively	<input type="checkbox"/> Leader	<input type="checkbox"/> Loyal	<input type="checkbox"/> Listener
18.	<input type="checkbox"/> Cute	<input type="checkbox"/> Chief	<input type="checkbox"/> Chart-maker	<input type="checkbox"/> Contented
19.	<input type="checkbox"/> Popular	<input type="checkbox"/> Productive	<input type="checkbox"/> Perfectionist	<input type="checkbox"/> Pleasant
20.	<input type="checkbox"/> Bouncy	<input type="checkbox"/> Bold	<input type="checkbox"/> Behaved	<input type="checkbox"/> Balanced
Total	_____	_____	_____	_____

Appendix 7 continued

Weaknesses

	Popular Sanguine	Powerful Choleric	Perfect Melancholy	Peaceful Phlegmatic
21.	<input type="checkbox"/> Brassy	<input type="checkbox"/> Bossy	<input type="checkbox"/> Bashful	<input type="checkbox"/> Blank
22.	<input type="checkbox"/> Undisciplined	<input type="checkbox"/> Unsympathetic	<input type="checkbox"/> Unforgiving	<input type="checkbox"/> Unenthusiastic
23.	<input type="checkbox"/> Repetitious	<input type="checkbox"/> Resistant	<input type="checkbox"/> Resentful	<input type="checkbox"/> Reticent
24.	<input type="checkbox"/> Forgetful	<input type="checkbox"/> Frank	<input type="checkbox"/> Fussy	<input type="checkbox"/> Fearful
25.	<input type="checkbox"/> Interrupts	<input type="checkbox"/> Impatient	<input type="checkbox"/> Insecure	<input type="checkbox"/> Indecisive
26.	<input type="checkbox"/> Unpredictable	<input type="checkbox"/> Unaffectionate	<input type="checkbox"/> Unpopular	<input type="checkbox"/> Uninvolved
27.	<input type="checkbox"/> Haphazard	<input type="checkbox"/> Headstrong	<input type="checkbox"/> Hard-to-please	<input type="checkbox"/> Hesitant
28.	<input type="checkbox"/> Permissive	<input type="checkbox"/> Proud	<input type="checkbox"/> Pessimistic	<input type="checkbox"/> Plain
29.	<input type="checkbox"/> Angered easily	<input type="checkbox"/> Argumentative	<input type="checkbox"/> Alienated	<input type="checkbox"/> Aimless
30.	<input type="checkbox"/> Naive	<input type="checkbox"/> Nervy	<input type="checkbox"/> Negative attitude	<input type="checkbox"/> Nonchalant
31.	<input type="checkbox"/> Wants credit	<input type="checkbox"/> Workaholic	<input type="checkbox"/> Withdrawn	<input type="checkbox"/> Worrier
32.	<input type="checkbox"/> Talkative	<input type="checkbox"/> Tactless	<input type="checkbox"/> Too sensitive	<input type="checkbox"/> Timid
33.	<input type="checkbox"/> Disorganized	<input type="checkbox"/> Domineering	<input type="checkbox"/> Depressed	<input type="checkbox"/> Doubtful
34.	<input type="checkbox"/> Inconsistent	<input type="checkbox"/> Intolerant	<input type="checkbox"/> Introvert	<input type="checkbox"/> Indifferent
35.	<input type="checkbox"/> Messy	<input type="checkbox"/> Manipulative	<input type="checkbox"/> Moody	<input type="checkbox"/> Mumbles
36.	<input type="checkbox"/> Show-off	<input type="checkbox"/> Stubborn	<input type="checkbox"/> Skeptical	<input type="checkbox"/> Slow
37.	<input type="checkbox"/> Loud	<input type="checkbox"/> Lord-over-others	<input type="checkbox"/> Loner	<input type="checkbox"/> Lazy
38.	<input type="checkbox"/> Scatterbrained	<input type="checkbox"/> Short tempered	<input type="checkbox"/> Suspicious	<input type="checkbox"/> Sluggish
39.	<input type="checkbox"/> Restless	<input type="checkbox"/> Rash	<input type="checkbox"/> Revengeful	<input type="checkbox"/> Reluctant
40.	<input type="checkbox"/> Changeable	<input type="checkbox"/> Crafty	<input type="checkbox"/> Critical	<input type="checkbox"/> Compromising
Total _____	_____	_____	_____	_____
Grand _____	_____	_____	_____	_____

	Popular Sanguine	Powerful Choleric	Perfect Melancholy	Peaceful Phlegmatic
EMOTIONS	Talkative, storyteller Good sense of humor Emotional and demonstrative Enthusiastic and expressive Cheerful and bubbling over Curious Lives in the present	Born leader Dynamic and active Must correct wrongs Strong-willed and decisive Not easily discouraged Independent and self-sufficient Exudes confidence	Deep and thoughtful Analytical Serious and purposeful Artistic or musical Sensitive to others Conscientious Idealistic	Easygoing and relaxed Calm, cool, and collected Patient, well balanced Quiet, but witty Sympathetic and kind Happily reconciled to life
WORK	Volunteers for jobs Thinks up new activities Creative and colorful Has energy and enthusiasm Inspires others to join	Goal oriented Sees the whole picture Organizes well Seeks practical solutions Moves quickly with action Delegates work	Schedule oriented Perfectionist, high standards Persistent and thorough Orderly and organized Sees the problems	Competent and steady Has administrative ability Mediates problems Avoids conflicts Good under pressure
FRIENDS	Makes friends easily Doesn't hold grudges Apologizes quickly Prevents dull moments Likes spontaneous activities	Is usually right Excels in emergencies Will lead and organize	Makes friends cautiously Content to stay in background Avoids causing attention Faithful and devoted Deep concern for others	Easy to get along with Pleasant and enjoyable Good listener Dry sense of humor Has many friends

WEAKNESSES

	Popular Sanguine	Powerful Choleric	Perfect Melancholy	Peaceful Phlegmatic
EMOTIONS	Compulsive talker Dwells on trivia Can't remember names Has restless energy Gets angry easily	Bossy Impatient Enjoys controversy Inflexible Unsympathetic	Remembers the negative Moody and Depressed Selective hearing Too introspective	Indecisive Avoids responsibility Too compromising Fearful and worried
WORK	Doesn't follow through Undisciplined Decides by feelings Easily distracted	Little tolerance for mistakes Bored by trivia Demanding of others Maybe rude or tactless	Not people oriented Prefers analysis over work Hard to please Standards often too high	Not goal oriented Lack self motivation Resents being pushed Would rather watch
	Hates to be alone Needs to be the center Fickle and forgetful	Dominates others Is too independent Maybe right, but unpopular	Insecure socially Critical of others Holds back affection	Indifferent to plans Resists change Stays uninvolved

APPENDIX 8

Discovering Your Experiences

In the boxes below, fill in key experiences from each category that have shaped who you are today.

Family Experiences

Educational Experiences

Work Experiences

Spiritual Experiences

Ministry Experiences

Painful Experiences

How have these experiences shaped you?

How do you think God wants to use these experiences in the future as you serve Him?

APPENDIX 9

Questions About Tithing:

What does "tithe" mean?

"Tithe" means "a tenth part".

What is the difference between a tithe and an offering?

A tithe is giving the first tenth of my income. An offering is anything I give in addition to my tithe.

Why should I tithe?

You should tithe because God commands it.

You should tithe because Jesus commanded it.

Tithing demonstrates that God has first place in your life.

Tithing expresses your love to the Lord.

"Each of you must bring a gift in proportion to the way the LORD your God has blessed you." Deuteronomy 16:17

God says that refusing to tithe is stealing from Him.

" 'Will a man rob God? Yet you are robbing Me!' But you say, 'How have we robbed You?' 'In tithes and offerings.'" Malachi 3:8 (NASB)

Tithing gives God a chance to prove He exists and wants to bless you!

"Bring the whole tithe into the storehouse that there may be food in My house. Test me in this," says the LORD Almighty, 'and see if I will not throw open the floodgates of heaven and pour out so much blessing that you will not have room enough to store it!'" Malachi 3:10

What should I tithe?

The tithe should come from the first part of what you have.

Where should I give my tithe?

The tithe should be given where you worship.

"Bring your whole tithe into the storehouse (church)." Malachi 3:10a

When should I tithe?

The tithe should be given weekly.

"On the first day of every week, each one of you should set aside a sum of money in keeping with your income, saving it up, so that when I come no collections will have to be made. " I Corinthians 16:2

How do I get started?

- If you are not giving anything, give something.
- If you are giving something, examine how much you are giving.
- Prayerfully, choose to give more.

"A tenth of all you produce of the land **is the Lord's."**

Leviticus 27:30 (GNT)

"You should tithe, yes, but **do not neglect** the more **important things."**

Matthew 23:23 (NLT)

"Honor the Lord with your wealth, with the **first fruits** of all your crops;" Proverbs 3:9

APPENDIX 10

Discovery Form

Compiling your answers from the previous pages, please complete the following:

1.) My areas of passion are:

1.

2.

3.

2.) My personality type is:

1.

2.

3.) My spiritual gifts are:

Highest:

1.

2.

3.

Lowest:

1.

2.

3.

4.) My natural abilities are:

1.

2.

3.

APPENDIX 11

Reccomended Readings

Books:

• **Crazy Love - Francis Chan**

Does something deep inside your heart long to break free from the status quo? Are you hungry for an authentic faith that addresses the problems of our world with tangible, even radical, solutions? God is calling you to a passionate love relationship with Himself.

• **Radical - David Platt**

In *Radical*, David Platt challenges you to consider with an open heart how we have manipulated the gospel to fit our cultural preferences. He shows what Jesus actually said about being His disciple--then invites you to believe and obey what you have heard.

• **The Barbarian Way - Erwin McManus**

Jesus never made a pristine call to a proper or safe religion. Jesus beckons His followers to a path that is far from the easy road. It is a path filled with adventure, uncertainty, and unlimited possibilities—the only path that can fulfill the deepest longings and desires of your heart.

• **The Christian Atheist - Craig Groeschel**

Groeschel's personal journey toward a more authentic God-honoring life is more relevant than ever. Christians and Christian Atheists everywhere will be nodding their heads as they are challenged to take their own honest moment and ask the question: am I putting my whole faith in God but still living as if everything was up to me?

• **Weird - Craig Groeschel**

Simply put, normal isn't working. Groeschel's WEIRD views will help you break free from the norm to lead a radically abnormal life.

• **Soul Shift - Steve DeNeff & David Drury**

SoulShift will move you from performance-driven religion to life-transforming relationship . . . for the rest of your life.

• **Not A Fan - Kyle Idleman**

Not a Fan calls you to consider the demands and rewards of being a true disciple.

• **Gods at War - Kyle Idleman**

In *Gods at War*, Kyle Idleman, helps every believer recognize there are false gods at war within each of us, and they battle for the place of glory and control in our lives.

• **Celebration of Disciples - Richard Foster**

In *Celebration of Disciples*, Foster explores the "classic Disciplines," or central spiritual practices, of the Christian faith to show how each of these areas contribute to a balanced spiritual life.

• **Captivating - Stasi Eldridge**

The message of *Captivating* is this: Your heart matters more than anything else in all creation. The desires you had as a little girl and the longings you still feel as a woman are telling you of the life God created you to live. He offers to come now as the Hero of your story, to rescue your heart and release you to live as a fully alive and feminine woman.

• **Sit, Walk, Stand - Watchman Nee**

An inspiring look at Ephesians and the believer's association with Christ, the world, and Satan.

Websites:

- **Crazy Love** - <http://crazylovebook.com>
- **Global Rich List** - <http://www.globalrichlist.com>
- **Bible** - <http://www.biblegateway.com>
- **Bible** - <http://www.blueletterbible.org>
- **Leadership** - <http://leadnet.org>
- **Right Now Ministry** - <https://www.rightnow.org>

Acknowledgments and Credits

With gratitude and appreciation, Shady Grove would like to thank the following for their work that has been acknowledged within the contents of Life Track:

- Pastor Steve DeNeff and his thoughts on The Two Economies from the Soul Shift Series, Wesleyan Publishing House (2012)
- Rick Warren and his notable work on S.H.A.P.E. from the Purpose Driven Life, Zondervan Publishing (2002)
- One-To-One Discipleship, Developed by Al and Lorraine Broom
Multiplication Ministries, Intentional Discipleship Network (2011)
- Robert L. Deffinbaugh, Th.M, (2009) The Measure of A New Testament Church. Retrived from bible.org.

Gratefully we acknowledge Reverend Nate Kingsbury and Reverend Tony Parsons who both so generously contributed their original work to Life Track.

Thank you to Daystar Community Church of Greensboro for partnering, encouraging and equipping our church by sharing their growth process, which was the basis for our Life Track.

LIFE TRACK ANSWER KEY

Track 101

Page 10

everything
separated
anything
Savior
sinless
penalty
eternal life

Page 11

1. burdened
2. friendship
3. special training
4. "Be you"
5. to listen
6. uncomfortable

Questions To Consider

1. free gift
2. baptized
3. road blocks

Page 12

1. Developing
2. merciful
3. Making room
4. opportunities
5. everywhere
6. personally broken
7. don't recognize
8. growing
9. unified
10. fleeting

Track 201

Page 16

1. automatic
2. process
3. discipline

Page 17

1. authority
2. principles
- A - Adoration
- C - Confession
- T - Thanksgiving
- S - Supplication

Page 18

1. person
2. convicts
3. guides
4. empowers

Page 19

direction
praying
zero-tolerance
unified vision
positive
supporting

Page 20

1. generosity
2. gratitude
3. receiving
4. first
5. serve
6. service

Page 21

grow
confidentiality
changing
sharing life
early church

Page 22

1. Fellowship
2. Service
3. Depth

Track 301

Page 25

1. Yourself
2. time
3. gifts
4. money

Page 27

God-given
build up
Holy Spirit
human
four
your place
stewardship

Page 28

Discover Your Passion

1. say
2. feel
3. act

Discover Your Natural Abilities

1. many
2. talents
3. unaware

Page 29

combination of two
unique
undiscovered
Peter
impulsively
Paul
in charge and
task-oriented
Thomas
fact-based
organized
John
peace-loving
relate
respond

Page 30

Discovering Your Experiences

1. Family
2. Educational
3. Work
4. Spiritual
5. Ministry
6. Painful

Track 401

Page 36

1. love
2. workers
3. huddle
4. Great Commission

Page 37

one life
responsibility
relationship
Story
My
Your
God's
invitation
journey
Jesus
neighborhood
United States
comfort zone
leader
Gray box area:
Scripture
gave
repent
forgives



lifetrack[©]

